



Gas & Ventilation

FLUES and Fittings

Did you know that A&B Industries is the manufacturer?

We manufacture and distribute the products directly to you the Wholesaler. There is no “middle man” This guarantees that you receive the best possible product at the best possible price.

Great Product Design and Functionality

A&B Industries Product Manager and founder is a mechanical tradesman who has been in the trade for over 25 years. His experience means that the product is designed to ensure that it functions the way it's supposed to, that's why we say A&B Industries is “Designed by tradesmen for tradesmen”. Our products are tested for reliability and safety. We have all the relevant approvals needed for our products such as the Australian Standards.

Complies to the Australian & New Zealand Standards

Product safety is a priority for us at A&B Industries. That is why we ensure that products comply with the Australian & New Zealand Standards.

What are Australian & New Zealand Standards (AUS/NZ)?

These Standards have been developed with a set of criteria which the product must meet. To achieve this status, the product must pass a series of tests in which it is put under difficult conditions that are designed to be similar to those that the item will endure in its day to day function. If the product has passed these tests then it gains certification under the Australian and New Zealand Standard. It is a requirement by legislation that if a product needs approval, then we must ensure that it is certified before it is sold to the customer. All electrical manufacturers regardless of whether they are a sole trader or large multinational company must meet the same standard. Our Gas Heating products are all audited yearly and Certified by the Australian Gas Association to comply with strict Gas Legislation.

Quality Assurance

Our aim has always been to offer our customers quality. We use ISO 9001 Quality Management Systems.



GAS, VENTILATION FLUES AND FITTINGS

“

A&B Industries have been supplying our Wholesale Branches with various Electrical Components using high quality and precision work of complex fabrication tasks, managing production requirements against workshop commitments.

”



ABOUT US

Welcome to our brand new brochure, we trust that this will be of assistance to you.

A&B Industries is proud to be an Australian sheet metal manufacturer with its factory located in the northern suburbs of Adelaide in South Australia.

We specialize in the manufacture of high quality products and components from Galvanized, Aluminium and stainless steel sheets. We have also great expertise in the manufacture of steel brackets, usually in hot dipped Galvanized finish.

Over the past two decades A&B Industries have developed a large range of standard products, enclosures and hot dipped Galvanized brackets for the Electrical, and Gas/ventilation, Wood Fire and Fencing Industries.

A&B Industries are also able to offer custom-built sheet metal enclosures for the electrical/electronic industry, from single units to small/medium production runs with obligation free assistance in design and quotations.

In addition to the following product range we also offer our services for:

- Guillotining
- Press Work
- Bending
- Spot Welding
- Rolling
- General Welding
- CNC Plasma Cutting
- Tooling Manufacture
- CNC Turret Press

Please feel free to contact us to discuss your requirements.

CONTENTS

<i>Adaptors Galvanized</i>	6	<i>Fire Box Galvanized</i>	23
<i>Apron Galvanized</i>	6	<i>Flue Pipe Round Single Skin</i>	24
<i>Apron Stainless</i>	7	<i>Flue Pipe Stainless Round Single Skin</i>	26
<i>Bends Rectangular Single Skin</i>	8	<i>Flue Rectangular Single Skin Galvanized</i>	26
<i>Offset Flue Connection Round Single Skin Galvanised</i>	9	<i>Flue Rectangular Twin Skin Galvanized / Aluminium</i>	27
<i>Offset Flue Connection Round Single Skin Stainless Steel</i>	9	<i>Flue Joining Kit Rectangular Twin Skin</i>	28
<i>Crimp Bends Single Skin Galvanized</i>	10	<i>Hood Bracket for LPG Cylinder</i>	28
<i>Crimp Bends Single Skin Stainless</i>	10	<i>Reducer Single Skin Galvanized</i>	29
<i>Bolted Sleeve Single Skin Galvanized</i>	11	<i>Spigot Single Skin Rectangular Galvanized</i>	29
<i>Brackets Stand Off Galvanized</i>	11	<i>Range Hood Adaptor</i>	30
<i>Brackets Galvanised</i>	12	<i>Range Hood Ceiling Flange</i>	30
<i>Ceiling Flanges Single Skin</i>	13	<i>Range Hood Round Flue Pipe</i>	31
<i>Chimney Plates</i>	13	<i>Range Hood Offset</i>	32
<i>Flashing Clips Single Skin Galvanized</i>	14	<i>Range Hood Rectangular Flue Pipe</i>	32
<i>Chinaman's Hats</i>	14	<i>Range Hood Flue Pipe Flexible</i>	33
<i>Chinaman's Hats Stainless</i>	15	<i>Range Hood Reducer Galvanized</i>	33
<i>Cowls Galvanized / Stainless AGA Certified 4234 & 5524</i>	16	<i>Range Hood Cowl</i>	34
<i>Cover Boxes and Trays Galvanized</i>	17	<i>Flue Pipe Twin Skin Round Galv/Alum</i>	35
<i>Cover Flue Galvanized</i>	17	<i>Flue Pipe Adjustable Twin Skin Round</i>	36
<i>Cover Plates Galvanized</i>	18	<i>Elbow 45° Round Twin Skin</i>	36
<i>Cover For Any Standard Continuous Hot Water Service</i>	18	<i>Elbow 90° Round Twin Skin</i>	37
<i>Dektite</i>	19	<i>Diverter Connector Round Twin Skin</i>	37
<i>Draft Diverter Single Skin</i>	20	<i>Ceiling Flange Round Twin Skin</i>	38
<i>Elbow Extended Suit Round To Rectangular Twin Skin</i>	21	<i>Flashing Clip Twin Skin Round</i>	38
<i>Elbow Console Housing AGA Certified 4412</i>	22	<i>Bracket Stand Off Twin Skin Galvanized</i>	39
<i>Elbow Inner Stainless Steel AGA Certified 4412</i>	22	<i>Console Space Heater Flue Kits</i>	39
<i>Elbow Face and Edge Rectangular Twin Skin</i>	23	<i>Wall Furnace Gas Heater Flue Kits</i>	40

<i>Hot Water Service Flue Kit Round</i>	40
<i>Gas Heater Flue Kits</i>	41
<i>Direct Vent Flues and Accessories</i>	42
<i>Range Hood Flexible Flue Kits</i>	43
<i>Gas Heater Twin Wall Flexible Flue Kits</i>	43
<i>Gas Heater Twin Wall Flexible Flue Pipe</i>	44
<i>Flexible Flue Pipe Connectors</i>	45
<i>Flue Pipe Rigid Galvanized Suit Flexible Flue Only</i>	46
<i>Louvre Vents</i>	46
<i>Louvre Plates</i>	47

GAS, VENTILATION FLUES AND FITTINGS

Adaptors Single Skin and Twin Skin Rectangle to Round



Formed metal component that adapts Twin Skin and Single Skin Rectangular flue To 100mm diameter flue pipe. Manufactured using AS/NZ Standard Grade Z275 0.6mm Galvanized Steel.

# Code	Product Details	Qty
ABSSADC	Single Skin 250mm x 40-100mm Centre	1
ABSSADO	Single Skin 250mm x 40-100mm Offset	1
ABTSADC	Twin Skin 240mm x 48-100mm Centre	1
ABTSADO	Twin Skin 240mm x 48-100mm Offset	1
ABT	Twin Skin Pressed 240mm x 48-100mm Compact.	1
ABADSP	Made to Order	1



Apron - Galvanized



Designed, to install around the outside of the cowl spigot to prevent water entering the outer skin of Twin Skin Flue Pipe. Manufactured using AS/NZ Standard Grade Z275 0.6mm Galvanized Steel.

# Code	Product Details	Qty
ABAPR15G	150mm diameter	1
ABAPR20G	200mm diameter	1
ABAPR25G	250mm diameter	1
ABAPRON	Made to Order	1



Gas, VENTILATION FLUES AND FITTINGS

Apron – Stainless Steel



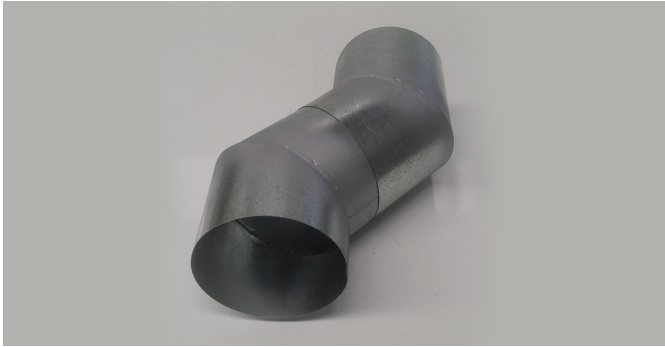
Designed, to install around the outside of the cowl spigot to prevent water entering the outer skin of Twin Skin Flue Pipe. Manufactured using AS/NZ Standard 304 2b Grade 0.6mm Stainless Steel

# Code	Product Details	Qty
ABAPR15S	150mm diameter	1
ABAPR20S	200mm diameter	1
ABAPR25S	250mm diameter	1
ABAPRON	Made to Order	1

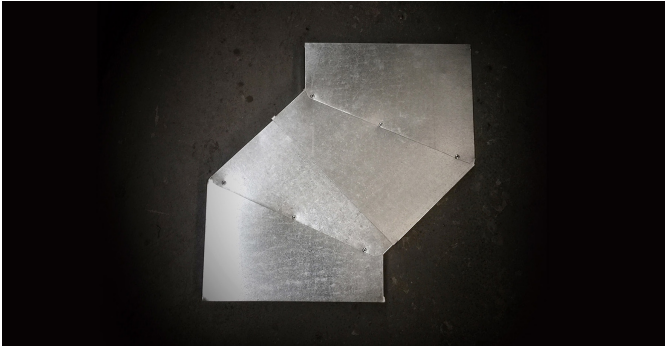


GAS, VENTILATION FLUES AND FITTINGS

Bend Rectangular Single Skin



A 45° Face Bend is used to divert Rectangular Single Skin Flue at 45° front to back. A 45° Edge bend is used to divert Rectangular Single Skin Flue at 45° left to right. A 110° Face bend is used to divert Rectangular Single Skin Flue at 110° front to back. Manufactured using AS/NZ Standard Grade Z275 0.6mm Galvanized Steel.

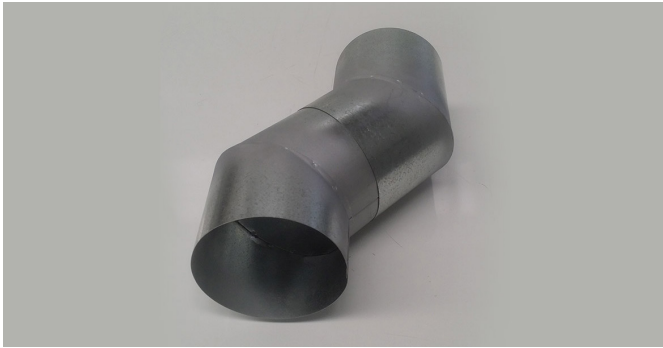


# Code	Product Details	Qty
ABOS100	100mm diameter x 45°	1
ABSS45EB	Rectangle L to R Single Skin	1
ABSS45FB	Rectangle F to B Single Skin	1



Gas, VENTILATION FLUES AND FITTINGS

Offset Flue Connection Round – Galvanized Single Skin – 0.6mm



Made to divert round single skin flue pipe around a beam or other obstruction. Manufactured, to suit single skin round flue pipe, in various diameters from 100mm diameter up to 250mm diameter x 45° degree angle. Manufactured using AS/NZ Standard Grade Z275 0.6mm Galvanized Steel.



# Code	Product Details	Qty
ABOS100	100mm diameter x 45°	1
ABOS125	125mm diameter x 45°	1
ABOS150	150mm diameter x 45°	1
ABOS175	175mm diameter x 45°	1
ABOS200	200mm diameter x 45°	1
ABOS225	225mm diameter x 45°	1
ABOS250	250mm diameter x 45°	1

Offset Flue Connection Round – Stainless Steel Single Skin – 0.6mm



Made to divert round single skin flue pipe around a beam or other obstruction. Manufactured, to suit single skin round flue pipe, in various diameters from 100mm diameter up to 250mm diameter x 45° degree angle. For smaller diameters a Crimp Bend is easier and cheaper. Manufactured using AS/NZ Standard Grade 0.6mm 316 Stainless Steel.



# Code	Product Details	Qty
ABSSOS100	100mm diameter x 45°	1
ABSSOS125	125mm diameter x 45°	1
ABSSOS150	150mm diameter x 45°	1
ABSSOS175	175mm diameter x 45°	1
ABSSOS200	200mm diameter x 45°	1
ABSSOS225	225mm diameter x 45°	1
ABSSOS250	250mm diameter x 45°	1
	Made to Order	1

Crimp Bends – Single Skin 0.6mm Galvanized



Used, to divert round single skin flue around an obstruction. Made from 75mm diameter up to 150mm diameter x 45° and 90°, the galvanized Crimp Bends are formed to shape. Manufactured using AS/NZ Standard Grade Z275 0.6mm Galvanized Steel.

# Code	Product Details	Qty
AB07545CB	75mm dia x 45° Galvanized	1
AB07590CB	75mm dia x 90° Galvanized	1
AB10045CB	100mm dia x 45° Galvanized	1
AB10090CB	100mm dia x 90° Galvanized	1
AB12545CB	125mm dia x 45° Galvanized	1
AB12590CB	125mm dia x 90° Galvanized	1
AB15045CB	150mm dia x 45° Galvanized	1
AB15090CB	150mm dia x 90° Galvanized	1

Crimp Bends – Single Skin 0.6mm 316 Stainless Steel



Used to divert round single skin flue around an obstruction. Made from 75mm diameter up to 150mm diameter x 45° and 90°, the 316 grade Stainless Steel Crimp Bends are formed to shape. Manufactured using AS/NZ Standard Grade 316 0.6mm Stainless Steel.

# Code	Product Details	Qty
ABSS07545CB	75mm dia x 45° Stainless Steel	1
ABSS07590CB	75mm dia x 90° Stainless Steel	1
ABSS10045CB	100mm dia x 45° Stainless Steel	1
ABSS10090CB	100mm dia x 90° Stainless Steel	1
ABSS12545CB	125mm dia x 45° Stainless Steel	1
ABSS12590CB	125mm dia x 90° Stainless Steel	1
ABSS15045CB	150mm dia x 45° Stainless Steel	1
ABSS15090CB	150mm dia x 90° Stainless Steel	1

Gas, Ventilation Flues and Fittings

Bolted Sleeve Slip Socket – Single Skin



To suit 75mm to 250mm flue pipe galvanized. Manufactured using AS/NZ Standard Grade Z275 0.6mm Galvanized Steel.

# Code	Product Details	Qty
ABBS075	Suit 75mm diameter Pipe	1
ABBS100	Suit 100mm diameter Pipe	1
ABBS125	Suit 125mm diameter Pipe	1
ABBS150	Suit 150mm diameter Pipe	1
ABBS175	Suit 175mm diameter Pipe	1
ABBS200	Suit 200mm diameter Pipe	1
ABBS225	Suit 225mm diameter Pipe	1
ABBS250	Suit 250mm diameter Pipe	1

Bracket Stand Off Galvanized



Used to support Single Skin Round Flue Pipe to be bolted against the wall to run the flue pipe up the outside wall. Can be bolted to any wall surface. Manufactured using AS/NZ Standard Grade Z275 0.6mm Galvanized Steel. Comes also for Twin Skin Round Flue Pipe.

# Code	Product Details	Qty
ABSOB75	Suit 75mm diameter Pipe	1
ABSOB100	Suit 100mm diameter Pipe	1
ABSOB125	Suit 125mm diameter Pipe	1
ABSOB150	Suit 150mm diameter Pipe	1
ABSOB175	Suit 175mm diameter Pipe	1
ABSOB200	Suit 200mm diameter Pipe	1
ABSOB225	Suit 225mm diameter Pipe	1
ABSOB250	Suit 250mm diameter Pipe	1

Brackets - Galvanized

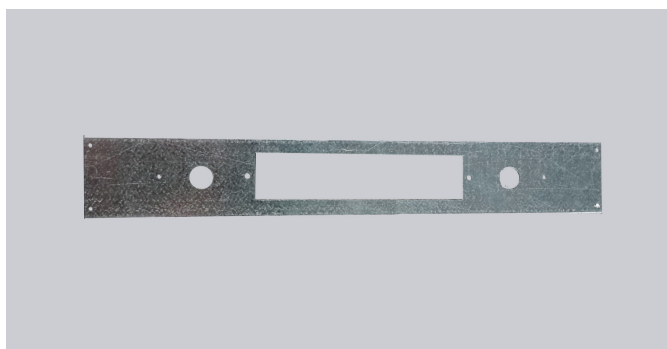


Bottom Heater Bracket nails onto the stud to support the heater.

Top Plate Spacer (Header Plate) is attached above the Wall Furnace to support and locate the Twin Skin Flue central in stud wall.

Flue Support Bracket is nailed between the studs before the heater is installed to hold the flue assembly in place.

Manufactured using AS/NZ Standard Grade Z275 0.6mm Galvanized Steel.

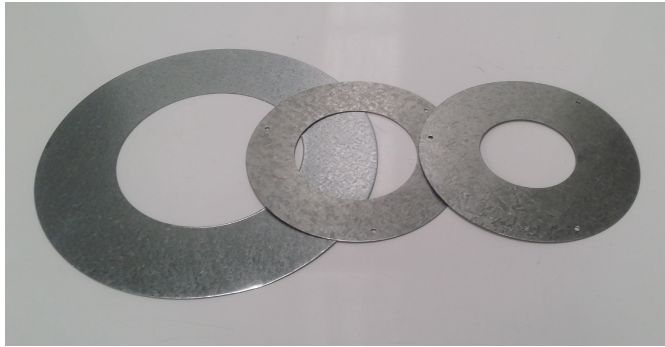


# Code	Product Details	Qty
ABBHB	Bottom Heater	1
ABFSB	Flue Support	1
ABTPS	Top Plate Spacer	1
ABBSP	Made to Order	1



Gas, VENTILATION FLUES AND FITTINGS

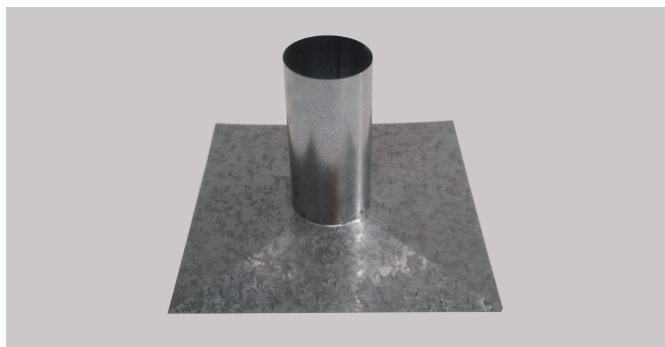
Ceiling Flanges Single Skin



Makes a neat finish with the cut-out for the flue pipe penetration through the ceiling. Various sizes to suit 75mm to 250mm diameter flue pipe. Manufactured using AS/NZ Standard Grade Z275 0.6mm Galvanized Steel.

# Code	Product Details	Qty
ABCF075	To suit 75mm pipe Galvanized	1
ABCF100	To suit 100mm pipe Galvanized	1
ABCF125	To suit 125mm pipe Galvanized	1
ABCF150	To suit 150mm pipe Galvanized	1
ABCF175	To suit 175mm pipe Galvanized	1
ABCF200	To suit 200mm pipe Galvanized	1
ABCF225	To suit 225mm pipe Galvanized	1
ABCF250	To suit 250mm pipe Galvanized	1

Chimney Plates – Galvanized 0.6mm



Various sized Chimney Plates from 100mm diameter Flue x 150H x 350 sq base up to 250mm diameter. Used to cover the outlet of a Brick or Masonry Chimney and allow the Flue Pipe to terminate using an AGA Approved Gas Cowl. Comes in 2 pieces for ease of transport. Manufactured using AS/NZ Standard Grade Z275 0.6mm Galvanized Steel.

# Code	Product Details	Qty
ABCP100	100mm Flue x 150 H x 350 sq base	1
ABCP125	125mm Flue x 150 H x 350 sq base	1
ABCP150	150mm Flue x 150 H x 350 sq base	1
ABCP175	175mm Flue x 150 H x 350 sq base	1
ABCP200	200mm Flue x 150 H x 350 sq base	1
ABCP225	225mm Flue x 150 H x 350 sq base	1
ABCP250	250mm Flue x 150 H x 350 sq base	1

GAS, VENTILATION FLUES AND FITTINGS

Clips – Flashing Single Skin – Galvanized



Manufactured to suit 75mm diameter up to 250mm diameter Single Skin Round Flue Pipe. Manufactured using AS/NZ Standard Grade Z275 0.6mm Galvanized Steel.

# Code	Product Details	Qty
ABFC075	To suit 75mm diameter pipe Galvanized	1
ABFC100	To suit 100mm diameter pipe Galvanized	1
ABFC125	To suit 125mm diameter pipe Galvanized	1
ABFC150	To suit 150mm diameter pipe Galvanized	1
ABFC175	To suit 175mm diameter pipe Galvanized	1
ABFC200	To suit 200mm diameter pipe Galvanized	1
ABFC225	To suit 225mm diameter pipe Galvanized	1
ABFC250	To suit 250mm diameter pipe Galvanized	1

Chinaman's Hats



Chinaman hat used to terminate a galvanized flue pipe from 100mm diameter up to 300mm diameter and prevent water and birds entering the flue pipe. Can be used for Range Hood flues and other types of ventilation. Not AGA approved for Gas Heating installations. Manufactured using AS/NZ Standard Grade Z275 0.6mm Galvanized Steel.

# Code	Product Details	Qty
ABCH100	Suit 100mm diameter Pipe	1
ABCH125	Suit 125mm diameter Pipe	1
ABCH150	Suit 150mm diameter Pipe	1
ABCH175	Suit 175mm diameter Pipe	1
ABCH200	Suit 200mm diameter Pipe	1
ABCH225	Suit 225mm diameter Pipe	1
ABCH250	Suit 250mm diameter Pipe	1
ABCH300	Suit 300mm diameter Pipe	1
ABCHSP	Made to Order	1

Chinaman's Hats Stainless



Chinaman hat used to terminate a Stainless Steel flue pipe from 100mm diameter up to 300mm diameter and prevent water and birds entering the flue pipe. Mainly used for Wood Fire and Pizza Oven Flues. Not AGA approved for Gas Heating installations. Manufactured using AS/NZ Standard Grade 0.6mm 316 Stainless Steel.

# Code	Product Details	Qty
ABCH100S	Suit 100mm diameter Pipe	1
ABCH125S	Suit 125mm diameter Pipe	1
ABCH150S	Suit 150mm diameter Pipe	1
ABCH175S	Suit 175mm diameter Pipe	1
ABCH200S	Suit 200mm diameter Pipe	1
ABCH225S	Suit 225mm diameter Pipe	1
ABCH250S	Suit 250mm diameter Pipe	1
ABCH300S	Suit 300mm diameter Pipe	1
ABCHSP	Made to Order	1

GAS, VENTILATION FLUES AND FITTINGS

Cowls Galvanized / Stainless AGA Cert 4234 & 5524



Australian Made AGA approved Gas Cowl available from 75mm diameter up to 250mm diameter. Used to terminate the gas flue pipe coming from a gas appliance. Can be used on both Twin Skin or Single Skin round flue pipe. Come as single items or in a bag of 10. Manufactured using AS/NZ Standard Grade Z275 0.6mm Galvanized Steel and AS/NZ Standard 316 Grade Stainless Steel.

# Code	Product Details	Qty
ABCO75	75mm dia AGA approved Galvanized	1
ABCO100	100mm dia AGA approved Galvanized	1
ABCO125	125mm dia AGA approved Galvanized	1
ABCO150	150mm dia AGA approved Galvanized	1
ABCO175	175mm dia AGA approved Galvanized	1
ABCO200	200mm dia Galvanized	1
ABCO225	225mm dia Galvanized	1
ABCO250	250mm dia Galvanized	1
ABSS75CO	75mm dia AGA approved Stainless	1
ABSS100CO	100mm dia AGA approved Stainless	1
ABSS125CO	125mm dia AGA approved Stainless	1
ABSS150CO	150mm dia AGA approved Stainless	1
ABSS175CO	175mm dia AGA approved Stainless	1
ABSS200CO	200mm dia Stainless	1
ABSS225CO	225mm dia Stainless	1
ABSS250CO	250mm dia Stainless	1



Gas, VENTILATION FLUES AND FITTINGS

Cover Boxes and Trays Galvanized

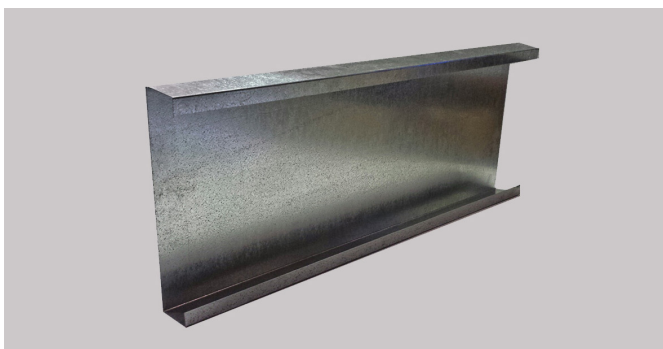


Bent up to cover up holes in the wall of removed appliances. Standard size is 900 x 900 x 80 and Manufactured using AS/NZ Standard Grade Z275 0.6mm Galvanized Steel. Special sizes made to order.

# Code	Product Details	Qty
AB9CB	900 SQ. x 80mm	1
ABCBS	Made to Order	1
ABTRAYS	Trays to Order	1



Cover Flue Galvanized



A cover made to conceal flue pipe that exits the back of a heater and up a wall. Standard sizes 350 x 70 x 900 Long and 350 x 70 x 2400 Long. Manufactured using AS/NZ Standard Grade Z275 0.6mm Galvanized Steel. Special sizes made to order.

# Code	Product Details	Qty
ABFC9	900mm x 350mm x 70mm	1
ABFC24	2400mm x 350mm x 70mm	1
ABFCSP	Made to Order	1



GAS, VENTILATION FLUES AND FITTINGS

Cover Plates Galvanized



Cover plates are used to cover the hole in a wall of a removed Appliance. Come standard 900 x 900, 1200 x 600 and 1800 x 600 and Manufactured using AS/NZ Standard Grade Z275 0.6mm Galvanized Steel. Special sizes made to order.

# Code	Product Details	Qty
AB9CP	900 SQ. 1.0 Thick	1
AB12CP	1200mm x 600mm 1.0 Thick	1
AB18CP	1800mm x 600mm 1.0 Thick	1
ABCPSP	Made to Order	1



Cover For Any Standard Continuous Hot Water Service



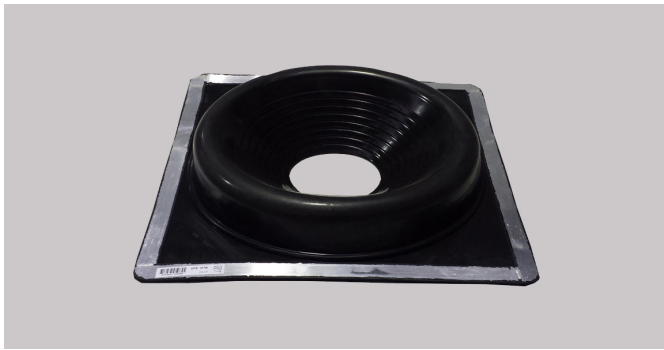
Units built into brick walls and replacing them with a standard continuous flow hot water service. Suitable for Rinnai, Rheem and Bosch systems. Come in 2 sizes, 1200 x 600 and 1800 x 600. Cover plate is supplied. Manufactured using AS/NZ Standard Grade Z275 0.6mm Galvanized Steel. Can be powder coated as needed.

# Code	Product Details	Qty
ABHWCS	1200mm high x 600mm wide	1
ABHWCL	1800mm high x 600mm wide	1



Gas, VENTILATION FLUES AND FITTINGS

Dektite



Used to seal Flue Pipe and available in 2 sizes from 75mm to 175mm and 150mm to 350mm diameters.

Black dektites can be painted with acrylic paint & withstand temperature up to 115°C or 150°C intermittently.

Red silicone dektites will withstand temps up to 200°C or 250°C intermittently with a BAL rating of 29.

Low profile base with watershed sleeve

Large square base will cover a larger opening.

Twenty Year warranty – just fit it and forget it!

CSA Approval number 70029509

# Code	Product Details	Qty
ABDFE204RE	75mm - 175mm Dektite suit steel roof	1
ABDFE108B	150mm - 350mm Dektite suit steel roof	1
ABSDA101B	50mm - 170mm Dektite suit Tile Roof	1
ABSDA103B	160mm - 300mm Dektite suit Tile Roof	1



GAS, VENTILATION FLUES AND FITTINGS

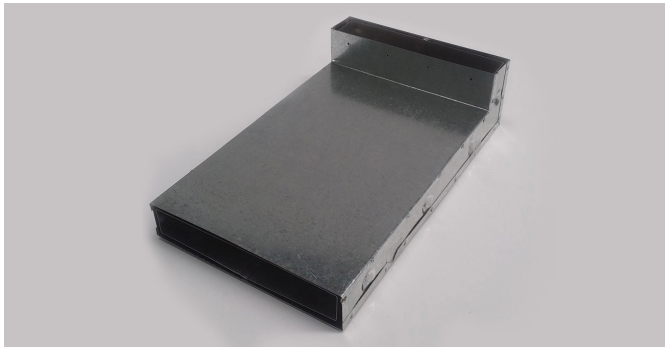
Draft Diverter Single Skin Galvanized



A Draft Diverter is a tapered unit used to draw air into the flue above to help ventilate the gas heater. Manufactured using AS/NZ Standard Grade Z275 0.6mm Galvanized Steel.

# Code	Product Details	Qty
ABDD100	100mm diameter Galvanized	1
ABDD125	125mm diameter Galvanized	1
ABDD150	150mm diameter Galvanized	1
ABDD175	175mm diameter Galvanized	1
ABDD200	200mm diameter Galvanized	1
ABDD225	225mm diameter Galvanized	1
ABDD250	250mm diameter Galvanized	1

Elbows – Extended suit Rectangular Twin Skin



Elbows – Extended suit Round to Rectangular Twin Skin:

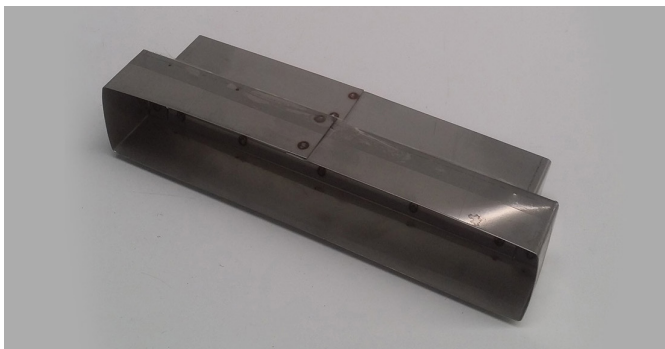
Manufactured with a Round 100mm single skin flue 90° bend to a Rectangular twin skin spigot 250 x 50mm. Used to go through a Brick Veneer wall to flue up on the outside wall.

Elbows – Extended suit Rectangular to Rectangular Twin Skin:

Manufactured to go through a Brick Veneer wall from a rectangular 90° twin skin bend 240x50 to twin skin rec 250x50 outlet.

Manufactured using AS/NZ Standard Grade Z275 0.6mm Galvanized Steel and Aluminum inner. AGA 7115 Certification.

NOTE: Both Elbows have an Adapter stainless steel 220 x 35 twin Skin 250 x 50 to fit and adapt at back of heater.

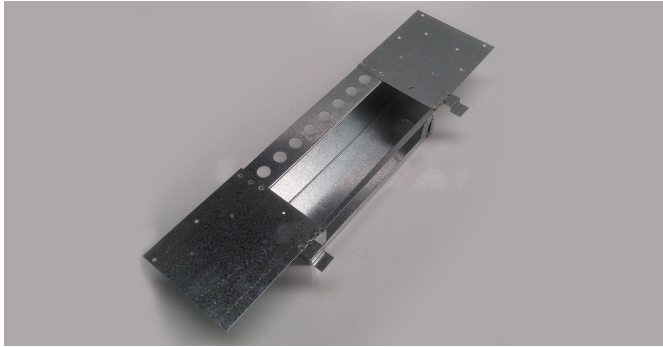


# Code	Product Details	Qty
ABEEREC	90° twin skin to 250 x 50	1
ABEERND	90° twin skin to 100 dia.	1
ABEERA	Adaptor 220 x 35 to 250 x50 Stainless	1



GAS, VENTILATION FLUES AND FITTINGS

Elbow Console Housing – Twin Skin – AGA Cert 4412



Used to fix the spigot at the back of a Console Heater to the stud and Gyprock and then allow the Twin Skin Rectangular flue up through the wall cavity up into the roof space. Manufactured using AS/NZ Standard Grade Z275 0.6mm Galvanized Steel outer and 316 grade Stainless Steel inner.

# Code	Product Details	Qty
ABCEH	Galvanized housing to rectangular twin	1



Elbow Inner Stainless Steel Twin Skin AGA Cert 4412

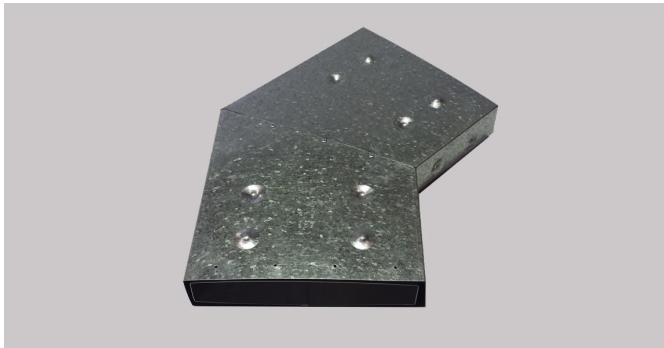


Used as the inner alone to fix the spigot at the back of a Console Heater and then allow the Twin Skin Rectangular flue up through the wall cavity up into the roof space. Manufactured using AS/NZ Standard Grade 316 Stainless Steel inner.

# Code	Product Details	Qty
ABCESSI	Stainless inner to suit rectangle twin skin	1



Elbow Face and Edge Rectangular Twin Skin

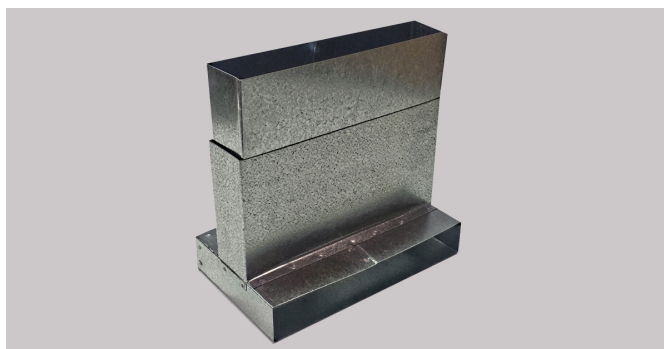


Manufactured to offset at 45 degrees or 110 degrees, Rectangle Twin Skin (240mm x 50mm) Flue either left to right or front to back. Manufactured using AS/NZ Standard Grade Z275 0.4mm Galvanized Steel and Aluminum inner. AGA 4412 Certification.

# Code	Product Details	Qty
ABTS45FB	Face Bend 45°	1
ABTS45EB	Edge Bend 45°	1
ABTS110FB	Face Bend 110°	1



Fire Box Galvanized



Elbow used to divert rectangle single skin flue (250mm x 40mm) through a double brick wall and up the outside of the brick wall. Manufactured using AS/NZ Standard Grade Z275 0.6mm Galvanized Steel.

# Code	Product Details	Qty
ABFB	Fire Box Single Skin	1



GAS, VENTILATION FLUES AND FITTINGS

Flue Pipe Round – Single Skin – Galvanized 0.6mm



Available in incremental diameters of 100mm up to 250mm diameter of varied lengths of 900mm, 1200mm and 1800mm in single skin. Tapered to neatly and easily fit together. Manufactured using AS/NZ Standard Grade Z275 0.6mm Galvanized Steel.

# Code	Product Details	Qty
ABFP10045	100mm dia x 450 single skin Galvanized	1
ABFP10060	100mm dia x 600 single skin Galvanized	1
ABFP10090	100mm dia x 900 single skin Galvanized	1
ABFP10012	100mm dia x 1200 single skin Galvanized	1
ABFP10018	100mm dia x 1800 single skin Galvanized	1
ABFP12545	125mm dia x 450 single skin Galvanized	1
ABFP12560	125mm dia x 600 single skin Galvanized	1
ABFP12590	125mm dia x 900 single skin Galvanized	1
ABFP12512	125mm dia x 1200 single skin Galvanized	1
ABFP12518	125mm dia x 1800 single skin Galvanized	1
ABFP15060	150mm dia x 600 single skin Galvanized	1
ABFP15090	150mm dia x 900 single skin Galvanized	1
ABFP15012	150mm dia x 1200 single skin Galvanized	1
ABFP15018	150mm dia x 1800 single skin Galvanized	1
ABFP17560	175mm dia x 600 single skin Galvanized	1
ABFP17590	175mm dia x 900 single skin Galvanized	1
ABFP17512	175mm dia x 1200 single skin Galvanized	1
ABFP20060	200mm dia x 600 single skin Galvanized	1
ABFP20090	200mm dia x 900 single skin Galvanized	1
ABFP20012	200mm dia x 1200 single skin Galvanized	1

Flue Pipe Round – Single Skin – Galvanized 0.6mm



Available in incremental diameters of 100mm up to 250mm diameter of varied lengths of 900mm, 1200mm and 1800mm in single skin. Tapered to neatly and easily fit together. Manufactured using AS/NZ Standard Grade Z275 0.6mm Galvanized Steel.

# Code	Product Details	Qty
ABFP22560	225mm dia x 600 single skin Galvanized	1
ABFP22590	225mm dia x 900 single skin Galvanized	1
ABFP22512	225mm dia x 1200 single skin Galvanized	1
ABFP25060	250mm dia x 600 single skin Galvanized	1
ABFP25090	250mm dia x 900 single skin Galvanized	1
ABFP25012	250mm dia x 1200 single skin Galvanized	1
ABFP30060	300mm dia x 600 single skin Galvanized	1
ABFP30090	300mm dia x 900 single skin Galvanized	1
ABFP30012	300mm dia x 1200 single skin Galvanized	1
ABFPSP	Made to Order	1

GAS, VENTILATION FLUES AND FITTINGS

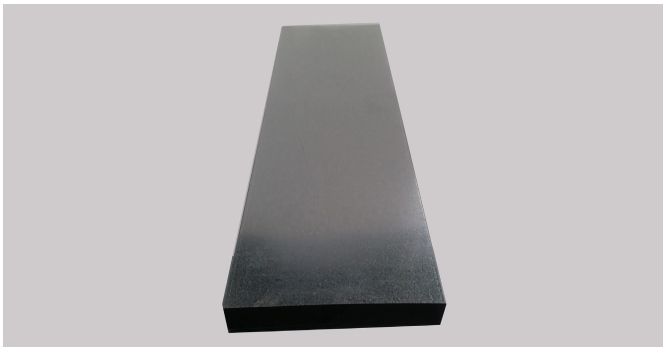
Flue Pipe Round – Single Skin – 316 Grade Stainless Steel 0.6mm



Available in incremental diameters of 100mm up to 250mm diameter of varied lengths of 900mm, 1200mm and 1800mm in single skin. Tapered to neatly and easily fit together. Manufactured using AS/NZ Standard 316 Grade Stainless Steel.

# Code	Product Details	Qty
ABSSFP10012	100mm diameter x 1200mm long	1
ABSSFP12512	125mm diameter x 1200mm long	1
ABSSFP15012	150mm diameter x 1200mm long	1
ABSSFP17512	175mm diameter x 1200mm long	1
ABSSFP20012	200mm diameter x 1200mm long	1
ABSSFP22512	225mm diameter x 1200mm long	1
ABSSFP25012	250mm diameter x 1200mm long	1

Flue Rectangular – Single Skin – Galvanized

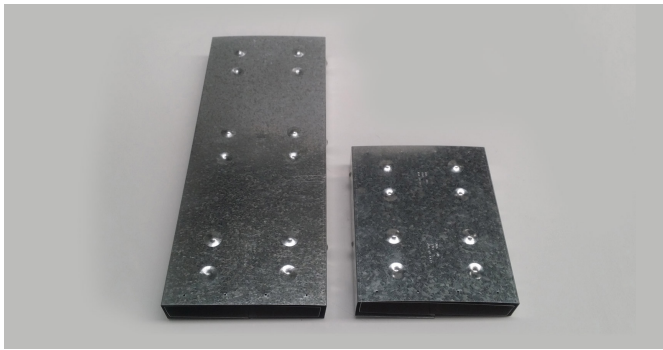


Single Skin Rectangular Flue Pipe, 250 x 40 and 2 lengths of 900mm and 1800 long, used with a Fire Box to flue from the back of the heater up through a solid brick wall or a masonry chimney to an adapter. Manufactured using AS/NZ Standard Grade Z275 0.6mm Galvanized Steel.

# Code	Product Details	Qty
ABSS900	250mm x 40mm x 900mm long	1
ABSS1800	250mm x 40mm x 1800mm long	1

Gas, VENTILATION FLUES AND FITTINGS

Flue Rectangular – Twin Skin – 240mm x 50mm AGA Cert 4412



Twin Skin Flue fits in the wall space to provide insulating capabilities and extends up into the ceiling space. Comes in various lengths from 300mm long Galvanized/Aluminum up to 2400mm long Galvanized Aluminum in a single length. Can be made longer using a Twin Skin Flue Joining Kit. Manufactured using AS/NZ Standard Grade Z275 0.4mm Galvanized Steel and Aluminum inner. AGA 4412 Certification.

# Code	Product Details	Qty
ABTS0300	300mm long x 240mm x 50mm	1
ABTS0450	450mm long x 240mm x 50mm	1
ABTS0600	600mm long x 240mm x 50mm	1
ABTS0900	900mm long x 240mm x 50mm	1
ABTS1200	1200mm long x 240mm x 50mm	1
ABTS1500	1500mm long x 240mm x 50mm	1
ABTS1800	1800mm long x 240mm x 50mm	1
ABTS1950	1950mm long x 240mm x 50mm	1
ABTS2100	2100mm long x 240mm x 50mm	1
ABTS2400	2400mm long x 240mm x 50mm	1



GAS, VENTILATION FLUES AND FITTINGS

Flue Joining Kit – Rectangular – Twin Skin AGA Cert 4412

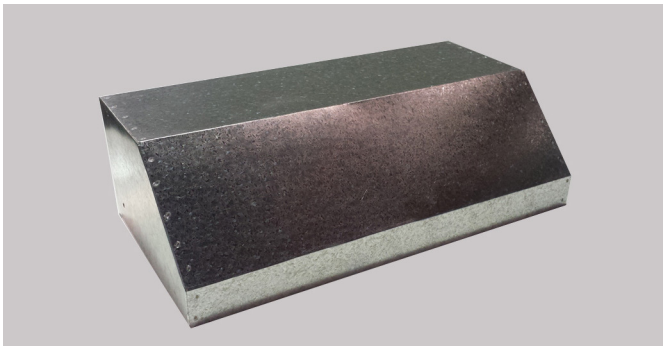


Assembled as a kit to join any Rectangular Twin Skin Flue pipe to make it longer. Manufactured using AS/NZ Standard Grade Z275 0.6mm Galvanized Steel and Aluminum inner. AGA 4412 Certification.

# Code	Product Details	Qty
ABJK	To suit rectangular Twin Skin	1

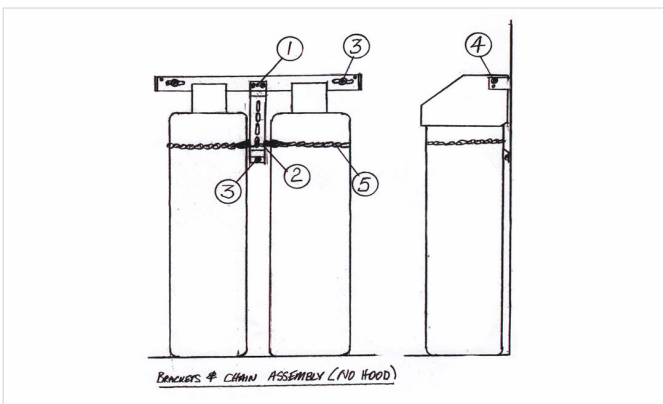


Hood Bracket for LPG Cylinder



Brackets and chains to retain 2 LPG Cylinders against a wall to prevent accidentally falling over. The Hood is used to keep rain and sun off the Cylinders. Can be Powder Coated at extra cost. Manufactured using AS/NZ Standard Grade Z275 0.6mm Galvanized Steel.

# Code	Product Details	Qty
ABHB	Hood Only for 2 LPG Cylinders	1
ABLPGB	Brackets/Chains for 2 LPG Cylinders	1



Gas, VENTILATION FLUES AND FITTINGS

Reducer Single Skin Galvanized

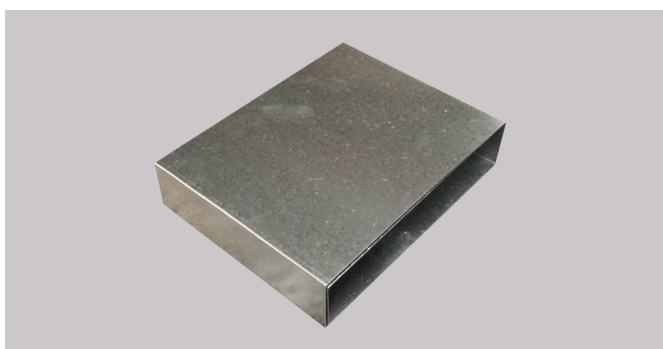


Various size Reducers to suit Single Skin Flue Pipe of the following sizes, 125mm diameter – 100mm diameter, 150mm diameter – 100mm diameter and 150mm diameter – 125mm diameter. Manufactured using AS/NZ Standard Grade Z275 0.6mm Galvanized Steel.



# Code	Product Details	Qty
ABRR10075	100mm – 75mm diameter	1
ABRR100250	100mm – 250mm diameter	1
ABRR125100	100mm – 125mm diameter	1
ABRR150100	100mm – 150mm diameter	1
ABRR150200	200mm – 150mm diameter	1
ABRR150250	250mm – 150mm diameter	1
ABRR250200	200mm – 250mm diameter	1
ABRR300250	250mm – 300mm diameter	1
ABRR350300	300mm – 350mm diameter	1
ABRRSP	Made to Order	1

Spigot Single Skin – Rectangular – Stainless Steel and Galvanized



250mm x 50mm x 300mm long.



# Code	Product Details	Qty
ABSP200	Inner and Outer 300mm long	1
ABSP181	Inner 1800mm Long	1
ABSP180	Outer 1800mm Long	1

GAS, VENTILATION FLUES AND FITTINGS

Range Hood Adaptor

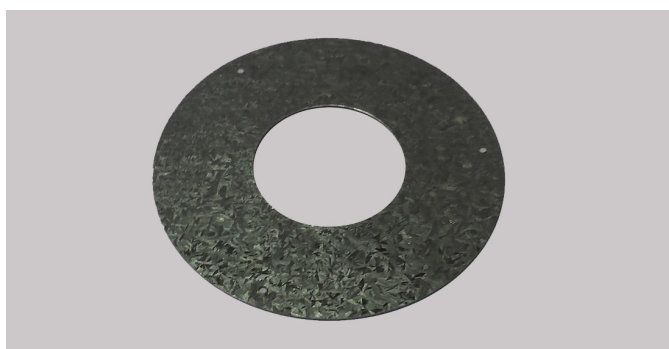


Formed metal component that adapts 285x85 Single Skin Range Hood Rectangular flue To 125mm or 150mm diameter flue pipe. Manufactured using AS/NZ Standard Grade Z275 0.6mm Galvanized Steel.

# Code	Product Details	Qty
ABAD285	Adaptor 285mm x 85mm to 125mm diameter	1



Range Hood Ceiling Flanges Galvanized / Colour Bond / Stainless



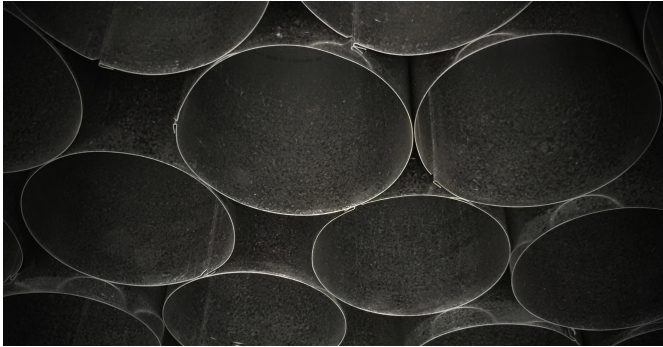
Makes a neat finish with the cut-out for the flue pipe penetration through the ceiling. Various sizes to suit 285x85 Rectangle Flue, 125mm Diameter and 150mm diameter flue pipe. Manufactured using AS/NZ Standard Grade Z275 0.6mm Galvanized Steel, Sign White Colour Bond and 304 2b Brushed Stainless Steel.

# Code	Product Details	Qty
ABCF125	125mm diameter Galvanized	1
ABCF125CB	125mm diameter White	1
ABCF150	150mm diameter Galvanized	1
ABCF150CB	150mm diameter White	1
ABCF285	285mm x 85mm Galvanized	1
ABCF285CB	285mm x 85mm White	1



Gas, Ventilation Flues and Fittings

Range Hood Flue Pipe Round Galvanized / Colour Bond / Stainless



Available in diameters of 125mm and 150mm diameter of lengths of 1200mm in single skin. Tapered, to, neatly and easily fit together. Manufactured using AS/NZ Standard Grade Z275 0.6mm Galvanized Steel, Color Bond & AS/NZ Standard 316 Grade Stainless Steel.

# Code	Product Details	Qty
ABFP12512	125mm diameter x 1200mm long	1
ABFP12512CR	125mm diameter x 1200mm long Crimp	1
ABFP12512CB	125mm diameter x 1200mm long White	1
ABSSFP12512	125mm diameter x 1200mm long Stainless	1
ABFP15012	150mm diameter x 1200mm long	1
ABFP15012CR	150mm diameter x 1200mm long Crimp	1
ABFP15012CB	150mm diameter x 1200mm long White	1
ABSSFP15012	150mm diameter x 1200mm long Stainless	1

GAS, VENTILATION FLUES AND FITTINGS

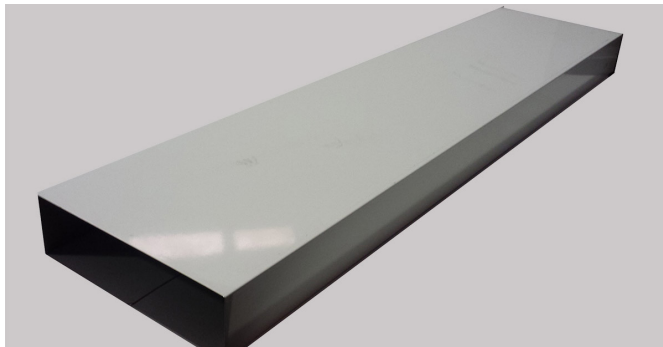
Range Hood Offset Elbows



Made to divert round single skin flue pipe around a beam or other obstruction. Manufactured, to suit single skin round Range Hood flue pipe, in various diameters from 125mm diameter or 150mm diameter x 45° angle. Manufactured using AS/NZ Standard Grade Z275 0.6mm Galvanized Steel.

# Code	Product Details	Qty
ABOS125	Elbow 125mm diameter x 45°	1
ABSSOS125	Elbow 125mm diameter x 45° Stainless	1
ABOS150	Elbow 150mm diameter x 45°	1
ABSSOS150	Elbow 150mm diameter x 45° Stainless	1

Range Hood Rectangle Flue Pipe



Single Skin Rectangular Flue Pipe, 285x85 available in 1200 or 2400 lengths. Manufactured using AS/NZ Standard Grade Z275 0.6mm Galvanized Steel, AS/NZ Standard 304 2b Brushed Stainless Steel or Sign White Color Bond.

# Code	Product Details	Qty
ABSS1200	Rectangular 285mm x 85mm x 1200mm Long Galv.	1
ABSS1200CB	Rectangular 285mm x 85mm x 1200mm Long White	1

GAS, VENTILATION FLUES AND FITTINGS

Range Hood Flue Pipe Flexible



Flexible Flue Pipe available in various diameters of 125mm to 150mm diameter and available in 2 different lengths of 1500mm long and 4000mm Long. Manufactured of 6006 grade Aluminum coil.

# Code	Product Details	Qty
ABFFP1254	125mm diameter x 4000mm long	1
ABFFP1504	150mm diameter x 4000mm long	1



Range Hood Reducers Galvanized



Various size Reducers to suit Single Skin Flue Pipe of the following sizes, 125mm diameter – 100mm diameter, 150mm diameter – 100mm diameter and 150mm diameter – 125mm diameter. Manufactured using AS/NZ Standard Grade Z275 0.6mm Galvanized Steel.

# Code	Product Details	Qty
ABRR150125	Reducer 150mm – 125mm	1
ABRR150100	Reducer 150mm – 100mm	1
ABRR125100	Reducer 125mm – 100mm	1



GAS, VENTILATION FLUES AND FITTINGS

Range Hood Roof Cowls



Australian Made Cowl available from 125mm diameter or 150mm diameter. Used to terminate the Rigid round Range Hood flue pipe. Come as single items or in a bag of 10. Manufactured using AS/NZ Standard Grade Z275 0.6mm Galvanized Steel.

# Code	Product Details	Qty
AB12CO	Roof Cowl 125mm diameter	1
AB15CO	Roof Cowl 150mm diameter	1
ABSSCO125	Roof Cowl 125mm diameter Stainless	1
ABSSCO150	Roof Cowl 150mm diameter Stainless	1

Gas, VENTILATION FLUES AND FITTINGS

Round Twin Skin Flue Pipes AGA Cert 7115



Available in 100mm diameter up to 300mm diameter of lengths from 300mm up to 1200mm long. Manufactured using AS/NZ Standard Grade Z275 0.6mm Galvanized Steel and Aluminium inner. AGA 7115 Certification.



# Code	Product Details	Qty
ABRTS100300	100mm diameter x 300mm long	1
ABRTS100600	100mm diameter x 600mm long	1
ABRTS100900	100mm diameter x 900mm long	1
ABRTS1001200	100mm diameter x 1200mm long	1
ABRTS125300	125mm diameter x 300mm long	1
ABRTS125600	125mm diameter x 600mm long	1
ABRTS125900	125mm diameter x 900mm long	1
ABRTS1251200	125mm diameter x 1200mm long	1
ABRTS150300	150mm diameter x 300mm long	1
ABRST150600	150mm diameter x 600mm long	1
ABRST150900	150mm diameter x 900mm long	1
ABRTS1501200	150mm diameter x 1200mm long	1
ABRST200300	200mm diameter x 300mm long	1
ABRST200600	200mm diameter x 600mm long	1
ABRST200900	200mm diameter x 900mm long	1
ABRTS2001200	200mm diameter x 1200mm long	1
ABRTS250450	250mm diameter x 450mm long	1
ABRST250900	250mm diameter x 900mm long	1
ABRST300450	300mm diameter x 450mm long	1
ABRST300900	300mm diameter x 900mm long	1

GAS, VENTILATION FLUES AND FITTINGS

Round Adjustable Flue Pipe – Twin Skin Galv/Alum AGA Cert 7715



Available in 100mm diameter up to 300mm diameter x 300mm long. Manufactured using AS/NZ Standard Grade Z275 0.6mm Galvanized Steel and Aluminium inner. AGA 7715 Certification.



# Code	Product Details	Qty
ABRTSAP100	100mm diameter x 300mm long	1
ABRTSAP125	125mm diameter x 300mm long	1
ABRTSAP150	150mm diameter x 300mm long	1
ABRTSAP200	200mm diameter x 300mm long	1
ABRTSAP250	250mm diameter x 300mm long	1
ABRTSAP300	300mm diameter x 300mm long	1

Round Elbow 45° Twin Skin Galvanized/Aluminium AGA Cert 7715



Manufactured, to suit Twin Skin Round Flue Pipe, in various diameters from 100mm diameter up to 300mm diameter x 45° angle. Manufactured using AS/NZ Standard Grade Z275 0.6mm Galvanized Steel and Aluminum inner. AGA 7715 Certification.



# Code	Product Details	Qty
ABRTSE10045	100mm diameter x 45° elbow	1
ABRTSE12545	125mm diameter x 45° elbow	1
ABRTSE15045	150mm diameter x 45° elbow	1
ABRTSE20045	200mm diameter X 45° elbow	1
ABRTSE25045	250mm diameter x 45° elbow	1
ABRTSE30045	300mm diameter x 45° elbow	1

Gas, VENTILATION FLUES AND FITTINGS

Round Elbow 90° Twin Skin Galvanized/Aluminium AGA Cert 7715



Manufactured, to suit Twin Skin Round Flue Pipe, in various diameters from 100mm diameter up to 300mm diameter x 90° angle. Manufactured using AS/NZ Standard Grade Z275 0.6mm Galvanized Steel and Aluminum inner. AGA 7715 Certification.



# Code	Product Details	Qty
ABRTSE10090	100mm diameter x 90° elbow	1
ABRTSE12590	125mm diameter x 90° elbow	1
ABRTSE15090	150mm diameter x 90° elbow	1
ABRTSE20090	200mm diameter X 90° elbow	1
ABRTSE25090	250mm diameter x 90° elbow	1
ABRTSE30090	300mm diameter x 90° elbow	1

Round Diverter Connectors Twin Skin Galvanized AGA Cert 7715



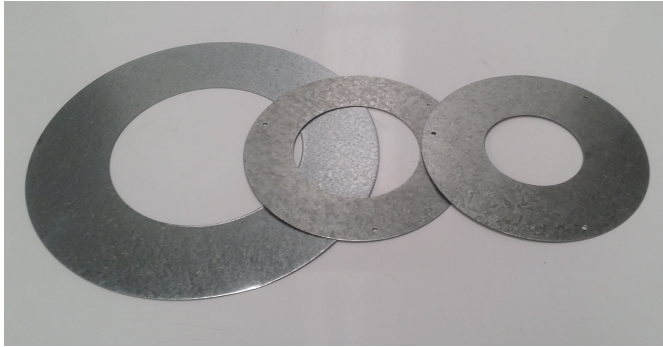
Joins an Adjustable Twin Skin Flue at the unit to be able to slide up into the Adjustable Twin Skin Flue to aid in removal of the unit for cleaning. Comes in 100mm diameter Galvanized up to 300mm diameter. Manufactured using AS/NZ Standard Grade Z275 0.6mm Galvanized Steel



# Code	Product Details	Qty
ABRTSDC100	100mm diameter Galvanized	1
ABRTSDC125	125mm diameter Galvanized	1
ABRTSDC150	150mm diameter Galvanized	1
ABRTSDC200	200mm diameter Galvanized	1
ABRTSDC250	250mm diameter Galvanized	1
ABRTSDC300	300mm diameter Galvanized	1

GAS, VENTILATION FLUES AND FITTINGS

Ceiling Flanges Round Twin Skin Galvanized



Makes a neat finish with the cut-out for the Twin Skin flue pipe penetration through the ceiling. Various sizes to suit 75mm to 300mm diameter flue pipe. Manufactured using AS/NZ Standard Grade Z275 0.6mm Galvanized Steel.

# Code	Product Details	Qty
ABRTSCF100	To suit 100mm diameter	1
ABRTSCF125	To suit 125mm diameter	1
ABRTSCF150	To suit 150mm diameter	1
ABRTSCF200	To suit 200mm diameter	1
ABRTSCF250	To suit 250mm diameter	1
ABRTSCF300	To suit 300mm diameter	1

Flashing Clips Galvanized Twin Skin Round



Manufactured to suit 100mm diameter up to 300mm diameter twin skin round flue pipe. Manufactured using AS/NZ Standard Grade Z275 0.6mm Galvanized Steel.

# Code	Product Details	Qty
ABRTSFC100	Suit 100mm diameter twin skin pipe	1
ABRTSFC125	Suit 125mm diameter twin skin pipe	1
ABRTSFC150	Suit 150mm diameter twin skin pipe	1
ABRTSFC200	Suit 200mm diameter twin skin pipe	1
ABRTSFC250	Suit 250mm diameter twin skin pipe	1
ABRTSFC300	Suit 300mm diameter twin skin pipe	1

Gas, VENTILATION FLUES AND FITTINGS

Bracket Stand Off Twin Skin Galvanized



Used to support Twin Skin Round Flue Pipe to be bolted against the wall to run the flue pipe up the outside wall. Can be bolted to any wall surface. Manufactured using AS/NZ Standard Grade Z275 0.6mm Galvanized Steel. Comes also for Twin Skin Round Flue Pipe.



# Code	Product Details	Qty
ABSOBTS75	Suit 75mm diameter Pipe	1
ABSOBTS100	Suit 100mm diameter Pipe	1
ABSOBTS125	Suit 125mm diameter Pipe	1
ABSOBTS150	Suit 150mm diameter Pipe	1
ABSOBTS175	Suit 175mm diameter Pipe	1
ABSOBTS200	Suit 200mm diameter Pipe	1
ABSOBTS225	Suit 225mm diameter Pipe	1
ABSOBTS250	Suit 250mm diameter Pipe	1

Flue Kits for Console Space Heater - Various AGA Approved components



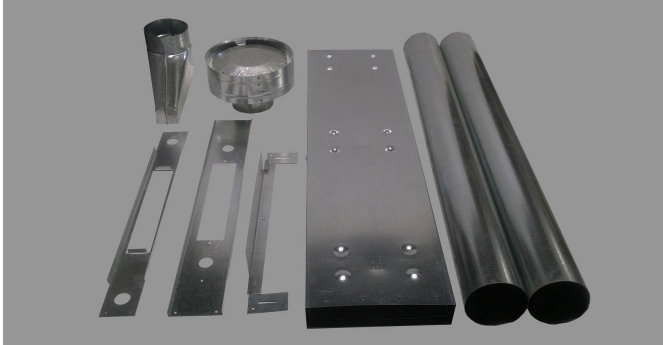
Flue Kit used in a Console Space Heater to offer a more economical price point compared to purchasing the total needed components. Available in the following configurations, external to external flued, external to internal flued and internal to internal flued. Manufactured using AS/NZ Standard Grade Z275 0.6mm Galvanized Steel.



# Code	Product Details	Qty
ABCSHKEIV	Kit Heater external to internal flue	1
ABCSHKIIV	Kit Heater Internal to Internal	1
ABCSHKEEV	Heater External to External	1

GAS, VENTILATION FLUES AND FITTINGS

Flue Kit for Wall Furnace Gas Heater – Various AGA Approved components



Flue Kit used in a Wall Furnace Heater to offer a more economical price point compared to purchasing the total components. Each Kit comes with a Top Plate Spacer, Bottom Heater Bracket, Flue Support Bracket, 2 x 100mm Single Skin Flue Pipes, Ceiling Ring, 3 x Flashing Clips, 3 Adjustable Stand Off Brackets and an AGA 100mm Cowl. Manufactured using AS/NZ Standard Grade Z275 0.6mm Galvanized Steel.

# Code	Product Details	Qty
ABFK	Kit Wall Furnace Flue – Standard	1



Hot Water Service Flue Kit – Twin Skin Pipe



Available in 2 sizes of 100mm diameter and 125mm diameter Twin Skin Flue Kit. Each kit contains 2 lengths of 125mm diameter x 900 long Twin Skin Flue Pipe, a 125mm diameter x 300mm long length of Adjustable Twin Skin Flue Pipe, a 125mm diameter Diverter Connector, a 125mm Cowl, a 125mm Flashing Clip and a 125mm diameter Ceiling Flange. The inner Flue of the twin Skin Flue Pipe is Manufactured of 8006 grade Aluminium Twin Wall coil and the other components are manufactured using AS/NZ Standard Grade Z275 0.6mm Galvanized Steel.

# Code	Product Details	Qty
ABHWSFK100	100mm diameter flue kit twin skin	1
ABHWSFK125	125mm diameter flue kit twin skin	1



Gas, VENTILATION FLUES AND FITTINGS

Gas Heater Flue Kits



Flue Kit used in Various Gas Heaters to offer a more economical price point compared to purchasing the total needed components. Available in the following to suit, Regency and Symmetry Direct Vent type heaters, Escea Heaters, Cannon and Rinnai, Royale and Sapphire Heaters. Manufactured using AS/NZ Standard Grade Z275 0.6mm Galvanized Steel.

# Code	Product Details	Qty
ABDVFKS	Direct Vent Suit Symmetry	1
ABDVFKR	Direct Vent Suit Regency	1
ABCFK	Cannon Free Standing	1
ABRFK	Rinnai Flue Kit suit Royale & Sapphire	1



GAS, VENTILATION FLUES AND FITTINGS

Direct Vent Flues and Accessories



Extra accessories that can be added to the Direct Vent Flue Kits when needed. Manufactured using AS/NZ Standard Grade Z275 0.6mm Galvanized Steel.

# Code	Product Details	Qty
ABDVO	Offsets Direct Vent 100	1
ABFPDV1017	Flue Pipe Direct Vent 100/175x900L	1
ABFPDV1220	Flue Pipe Direct Vent 125/200x900L	1
ABCODV10	Cowl Direct Vent Assembly 100 Dia.	1
ABCODV12	Cowl Direct Vent Assembly 125 Dia.	1



Gas, VENTILATION FLUES AND FITTINGS

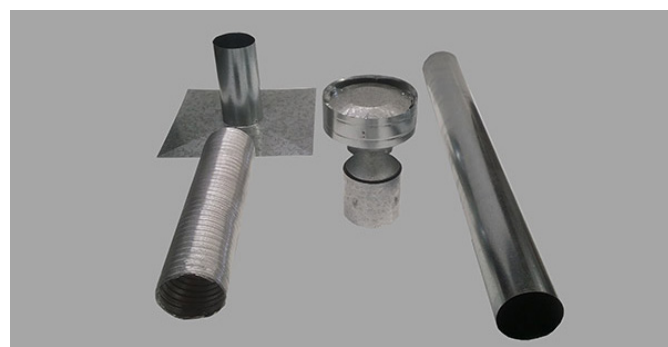
Range Hood Flexible Flue Kits



A safer, easy to install and more hygienic Flue Kit for Range Hoods allowing cooking gases to be exhausted outside your home. Kits to suit Tiled Roof or Steel Roof. Each kit contains a 125mm diameter by 4000mm length of Aluminium Twin Wall Flexible Flue, a 125mm Cowl, a Dektite to seal the roof, Ceiling Ring and 2 Support Angles. Flexible Flue Pipe is Manufactured of 8006 grade Aluminium coil and the other components are manufactured using AS/NZ Standard Grade Z2755 0.6mm Galvanized Steel.

# Code	Product Details	Qty
ABRHFK125T	Range Hood Flue Kit suit Tiled Roof	1
ABRHFK125S	Range Hood Flue Kit suit Steel Roof	1

Flexible Flue Kits Gas Heater



Flex Flue Kit containing 100 diameter, 125mm diameter or 150mm diameter Flexible Flue Pipe, a connector, a length of 900mm long Rigid Flue Pipe, Chimney Plate and an AGA approved Gas Cowl. Flexible Flue Pipe is Manufactured of 8006 grade Aluminium coil and the other components are manufactured using AS/NZ Standard Grade Z275 0.6mm Galvanized Steel.

# Code	Product Details	Qty
ABFFPK100	Flex Flue Kit 100mm diameter	1
ABFFPK125	Flex Flue Kit 125mm diameter	1
ABFFPK150	Flex Flue Kit 150mm diameter	1

Gas, VENTILATION FLUES AND FITTINGS

Flexible Flue Pipe to suit Gas/Range Hood.

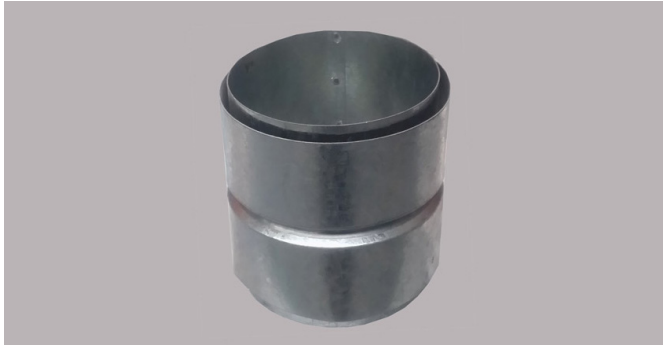


Gas Flexible Flue Pipe available in various diameters of 75mm up to 300mm diameter and available in 2 different lengths of 1500mm long and 4000mm Long. Manufactured of 6006 grade Aluminum coil.

# Code	Product Details	Qty
ABFFP754	Gas Flexible Flue Pipe 75mm x 4000mm long	1
ABFFP1004	Gas Flexible Flue Pipe 100mm x 4000mm long	1
ABFFP1254	Gas Flexible Flue Pipe 125mm x 4000mm long	1
ABFFP1504	Gas Flexible Flue Pipe 150mm x 4000mm long	1
ABFFP2004	Gas Flexible Flue Pipe 200mm x 4000mm long	1
ABFFP2504	Gas Flexible Flue Pipe 250mm x 4000mm long	1
ABFFP3004	Gas Flexible Flue Pipe 300mm x 4000mm long	1
ABFFP751	Gas Flexible Flue Pipe 75mm x 1500mm long	1
ABFFP1001	Gas Flexible Flue Pipe 100mm x 1500 mm long	1
ABFFP1251	Gas Flexible Flue Pipe 125mm x 1500mm long	1
ABFFP1501	Gas Flexible Flue Pipe 150mm x 1500mm long	1
ABFFP2001	Gas Flexible Flue Pipe 200mm x 1500mm long	1
ABFFP2501	Gas Flexible Flue Pipe 250mm x 1500mm long	1
ABFFP3001	Gas Flexible Flue Pipe 300mm x 1500 mm long	1

Gas, VENTILATION FLUES AND FITTINGS

Flexible Flue Pipe Connectors Gas



Easy to install Gas Flexible Flue Connector to suit from 75mm up to 300mm diameter Flexible Flue Pipe. Used to join 2 lengths of Flexible Flue Pipe using Tek screws. Manufactured using AS/NZ Standard Grade Z275 0.6mm Galvanized Steel.

# Code	Product Details	Qty
ABFFC75	Gas Flexible Flue Connector 75mm	1
ABFFC100	Gas Flexible Flue Connector 100mm	1
ABFFC125	Gas Flexible Flue Connector 125mm	1
ABFFC150	Gas Flexible Flue Connector 150mm	1
ABFFC200	Gas Flexible Flue Connector 200mm	1
ABFFC250	Gas Flexible Flue Connector 250mm	1
ABFFC300	Gas Flexible Flue Connector 300mm	1

GAS, VENTILATION FLUES AND FITTINGS

Flue Pipe Rigid Galvanized Suit Flexible Flue Only



Rigid Galvanized Flue Pipe 100mm diameter up to 300mm diameter and 900mm long that accommodates internally the Flexible Flue Pipe just before the Cowl termination. Use a Dektite to seal the roof penetration. Manufactured using AS/NZ Standard Grade Z275 0.6mm Galvanized Steel.

# Code	Product Details	Qty
ABFFP7590	Flue Pipe Rigid Galvanized 75mm x 900mm Long	1
ABFFP10090	Flue Pipe Rigid Galvanized 100mm x 900mm Long	1
ABFFP12590	Flue Pipe Rigid Galvanized 125mm x 900mm Long	1
ABFFP15090	Flue Pipe Rigid Galvanized 150mm x 900mm Long	1
ABFFP20090	Flue Pipe Rigid Galvanized 200mm x 900mm Long	1
ABFFP25090	Flue Pipe Rigid Galvanized 250mm x 900mm Long	1
ABFFP30090	Flue Pipe Rigid Galvanized 300mm x 900mm Long	1

Louvre Vents



Designed to terminate round flue pipe at the wall. Comes in 100 dia. Spigot up to 200 dia. Spigot in increments of 25mm. Manufactured using AS/NZ Standard Grade Z275 0.6mm

# Code	Product Details	Qty
ABLVS100	100mm diameter Spigot	1
ABLVS125	125mm diameter Spigot	1
ABLVS150	150mm diameter Spigot	1
ABLVS200	200mm diameter Spigot	1

Gas, VENTILATION FLUES AND FITTINGS

Louvre Plates



Used for internal and external ventilation. For flue less gas heaters up to 18 mega joule. Suitable for Brick, Weatherboard, Fibro Cement, Gyprock, Blue Board, Hebel and Doors. Our Louvre Plates are Manufactured using AS/NZ Standard Grade Z275 0.6mm Galvanized Steel and powder coated in 3 colours to match Red and Cream bricks and satin white for interior applications. They come complete with plugs and screws to fasten to exterior brickwork. 360mm Wide x 320mm High, Powder Coated.



# Code	Product Details	Qty
ABLP36	360mm wide x 320 high, Powder Coated	1



**SA OFFICE
CONTACT INFO**

5 Bremen Drive, Salisbury South 5106, SA.

Phone: **(08) 8281 1211**

Fax: **(08) 8281 7443**

Website: www.abindustries.com.au

E-mail: enquiries@abindustries.com.au

