



# WOOD FIRE

FLUES and Fittings



## Did you know that A&B Industries is the manufacturer?

We manufacture and distribute the products directly to you. There is no “middle man” this guarantees that you receive the best possible product at the best possible price.

## Great Product Design and Functionality

A&B Industries Product Manager and founder is a mechanical tradesman who has been in the trade for over 25 years. His experience means that the product is designed to ensure that it functions the way it's supposed to, That's why we say A&B Industries is “Designed by tradesmen for tradesmen”. Our products are tested for reliability and safety. We have all the relevant approvals needed for our products such as the Australian Standards.

## Complies to the Australian & New Zealand Standards

Product safety is a priority for us at A&B Industries. That is why we ensure that products comply with the Australian & New Zealand Standards.

### *What are Australian & New Zealand Standards (AUS/NZ)?*

These Standards have been developed with a set of criteria's which the product must meet. To achieve this status, the product must pass a series of tests in which it is put under difficult conditions that are designed to be similar to those that the item will endure in its day to day function. If the product has passed these tests then it gains certification under the Australian and New Zealand Standard.

It is a requirement by legislation that if a product needs approval, then we must ensure that it is certified before it's sold to the customer. All Electrical Manufacturers regardless of whether they are a sole trader or large multinational company must meet the same standard.

Our Gas Heating Products are all audited yearly and Certified by the Australian Gas Association to comply with strict Gas Legislation.

## Quality Assurance

Our aim has always been to offer our customers quality. We use ISO 9001 Quality Management Systems.

## 100% Australian Owned

When you buy from A&B Industries you are supporting an Australian family owned and managed company. We employ around 20-30 full time and casual employees.

## Certification & Accreditations

A&B is certified and accredited to the following standards: –

- ISO 9001:2008. Quality system helps ensure consistent product and traceability.
- AS/NZS 4801:2001. OH&S system protects our work force from dangers of working with sheet metal.
- NATA tested products – independently tested IP ratings
- AGA approved and tested

## History

Key dates in the history of A&B are as follows:

- 1987 – A&B founded manufacturing Gas Heating and some Electrical Products.
- 1998 – Formation of Domestic Enclosures Division
- 1998 – Move to new premises in Salisbury South SA to increase capacity
- 2000 – Extension of Salisbury South premises completed
- 2007 – Celebrates 20 years of business.
- 2011 – Release of NBN enclosure system solution
- 2015 – Upgrade of existing plant to include new conveyor line and CNC Turret press.
- 2015 – Re-branding of A&B, consolidating all divisions to offer a unified vision for the future.
- 2016 - Installation of Powder Coating Oven and line.

## Manufacturing Facilities

### Adelaide – 2,000m<sup>2</sup>

Residential Commercial Electrical, Meter Enclosure, Gas Heating, Wood Fire and Fencing Products are primarily manufactured from our facility in South Australia. Facilities include the following equipment.

- 8 various style “G” Presses
- 2 Guillotines with a capacity to cut 3.0 MS up to 2400 long.
- 30 Ton 2500 x 1200 Nishimbo CNC Turret Press
- CNC Plasma Cutting
- Tig welding of Stainless Steel and Aluminium
- Mig welding facilities.
- 4 Mechanical Brake Presses for folding material 3.0 x 3m long.
- Spot Welders.
- Flue Pipe forming and rolling machinery.
- Spray painting booth and conveyor line.
- Tool room facility to maintain and manufacture tooling and jigs.
- Transport capability to give on time delivery.

“

*A&B Industries have been supplying our Wholesale Branches with various Electrical Components using high quality and precision work of complex fabrication tasks, managing production requirements against workshop commitments.*

”



## About A&B Industries

Welcome to our brand new brochure, we trust that this will be of assistance to you.

A&B Industries is proud to be an Australian Sheet Metal Manufacturer with its factory located in the northern suburbs of Adelaide in South Australia.

We specialize in the manufacture of high quality products and components from galvanised, aluminium and stainless steel sheets. We have also great expertise in the manufacture of steel brackets, usually in hot dipped galvanised finish.

Over the past two decades A&B Industries have developed a large range of standard products, enclosures and hot dipped galvanised brackets for the Electrical, and Gas/Ventilation, Wood Fire and Fencing Industries.

A&B Industries are also able to offer custom-built sheet metal enclosures for the electrical/electronic industry, from single units to small/medium production runs with obligation free assistance in design and quotations.

A&B Industries also like to highlight their ability to manufacture non-standard equipment in: Galvanised steel, stainless steel, aluminium, mild steel tubing etc.

- Switchboards and general purpose enclosures complete with cut-outs, equipment mounting plates, rain hoods.
- Powder coating of our products in any colour
- Ducting and flashings.
- Galvanised protection cages in any size
- Customer's Support Poles as specified by SAPN Guide for Customer's support poles
- Guillotining, bending, punching, welding, CNC Turret Punching and CNC Plasma Cutting

**Feel free to call us anytime during working hours for an obligation free quotation and assistance in design.**



## Contents

Anti-Down Draft Cows	6	Decorative Mesh 90°	28
Aprons - Galvanized and Stainless	7	Dektite Flue Roof Flashing	29
Angles 1.2 - Galvanized	8	Flues Stainless - Active	30
Ceiling Drop Boxes with End Caps Painted - Galvanized	9	Flue Casings Inner & Outer - Galvanized	31
Ceiling Drop Boxes with End Caps - Stainless	9	Flue Casings Inner & Outer - Stainless	32
Ceiling Box Flanges with Straps Fitted Painted - Galvanized	10	Flue Pipe Triple Set	33
Ceiling Box Flanges with Straps Fitted - Stainless	10	Flue Pipe Flexible	34
Ceiling Box End Caps as Separate Part Painted - Galvanized	11	Offset - Galvanized	35
Ceiling Box End Caps as Separate Part Painted - Stainless	11	Offset - Stainless	36
Chimney Plate suit Flexible Flue	12	Offset Flat Back 90° - Stainless	37
Cows - Wood Fire Galvanized (NO SKIRT)	13	Offset Mantle	38
Cows - Wood Fire Stainless (NO SKIRT)	14	Offset 45° Elbow Triple Skin	39
Connector suit Flexible Flue Pipe	15	Heat Shield - Stainless	40
Cows AGA Certified 4234 & 5524	16	Raked Ceiling Flanges - Painted and Stainless	41
Cows Stainless AGA Certified 4234 & 5524	17	Reducers - Galvanized and Stainless	42
Cowl - Homestead - Stainless	18	Stand Off Wall Brackets - Galvanized	43
Cowl Horizontal Discharge AGA Certified 4234 & 5524	19	Stand Off Wall Brackets - Stainless	44
Cowl - Rocket Stainless (Extra draw)	20	Tee - Stainless	45
Cows Vertical Discharge Stainless Skirt	21	Tee - Galvanized	46
Wind Cowl Galvanized or Stainless	22	Wood Fire Zero Clearance Box	47
Cows - Wood Fire - Galvanized Skirt	23	Wood Fire Flue Kits - Stainless	48
Cows - Wood Fire - All Stainless	24	Wood Fire Flue Kits - Painted Metallic Black Triple Skin Flue Kit	49
Decorative Outer Flue - Painted	25	Decorative Mesh Kits - Full Kit - Stainless	50
Decorative Outer Flue - Stainless	26	Decorative Mesh Kit's - Full Kit - Painted Metallic Black	51
Decorative Mesh 45°	27	Decorative Mesh Kit's - Stainless - Flue Only	52



<i>Decorative Mesh Kit's - Painted - Flue Only .....</i>	<b>53</b>
<i>Chimney Flue Kits .....</i>	<b>54</b>
<i>Pizza Oven Flue Kits .....</i>	<b>55</b>
<i>Wall Penetration Flue Kit .....</i>	<b>56</b>
<i>Floor / Ceiling Penetration Flue Kit .....</i>	<b>57</b>
<i>Flexible Flue Chimney Liner Flue Kit .....</i>	<b>58</b>
<i>Zero Clearance Triple Flue Kit .....</i>	<b>59</b>



## Anti-Down Draft Cowls



The Anti-Downdraught Cowl eliminates down draughts in all weather conditions. Even if the wind is blowing vertically down, the cowl will convert that energy into a positive up draught. Pilot lights that extinguish themselves, due to down draught will keep alight.

Rain, snow and birds are prevented from entering the chimney. The design, which has been proven over many years, ensures that the cowl will continue to ventilate the chimney when the fire or appliance is unlit.

It is available in 100mm to 300mm diameters.

Fitting is simple, the stem of the cowl is slightly undersize so that it can slide down inside the bore of most prefabricated metal chimneys, liners or conventional brick chimneys. This joint should be sealed.

Please ensure that the fire/appliance has enough combustion air to operate correctly. Can add mesh for bush fire embers protection. Manufactured using AS/NZ Standard Grade 304 2b Grade 0.6mm Stainless Steel.

# Code	Product Details	Qty
ABADDC10S	100 (6") dia. Stainless	1
ABADDC11S	115 (4.5") dia. Stainless	1
ABADDC12S	125 (5") dia. Stainless	1
ABADDC15S	150 (6") dia. Stainless	1
ABADDC20S	200 (8") dia. Stainless	1
ABADDC25S	250 (10") dia. Stainless	1
ABADDC30S	300 (12") dia. Stainless	1



## Aprons - Galvanized



Designed, to install around the outside of the Cowl or Chinaman's Hat Spigot to prevent water entering the outer skin of Twin Skin Flue Pipe. Manufactured using AS/NZ Standard Grade Z275 0.6mm Galvanized Steel.

# Code	Product Details	Qty
ABAPR10G	100 (4") dia.	1
ABAPR11G	115 (4.5") dia.	1
ABAPR12G	125 (5") dia.	1
ABAPR15G	150 (6") dia.	1
ABAPR20G	200 (8") dia.	1
ABAPR25G	250 (10") dia.	1

## Aprons - Stainless



Designed, to install around the outside of the Cowl or Chinaman's Hat Spigot to prevent water entering the outer skin of Twin Skin Flue Pipe.

Manufactured using AS/NZ Standard 304 2b Grade 0.6mm Stainless Steel.

# Code	Product Details	Qty
ABAPR10S	100 (4") dia. Stainless	1
ABAPR11S	115 (4.5") dia. Stainless	1
ABAPR12S	125 (5") dia. Stainless	1
ABAPR15S	150 (6") dia. Stainless	1
ABAPR20S	200 (8") dia. Stainless	1
ABAPR25S	250 (10") dia. Stainless	1



## Angles 1.2 - Galvanized



Used in the installation of twin skin or triple skin flue to fix the flue pipe and Ceiling Drop Box to the ceiling joists and beams.

Manufactured using AS/NZ Standard Grade Z275 1.2mm Galvanized Steel.

# Code	Product Details	Qty
ABANG227	750x25x25	1
ABANG228	1800x25x25	1
ABANG527	750x50x25	1
ABANG5512	1200x50x50	1
ABANG5524	2400x50x50	1



## Ceiling Drop Boxes with End Caps Painted - Galvanized



The Ceiling Box End Caps are fitted to a 900L Galvanized Outer Flue Pipe to make a Ceiling Drop Box which is then fixed to Angles that support the Ceiling Box/Flue to the roof beams. These are painted Metallic Black.

Manufactured using AS/NZ Standard Grade Z275 0.6mm Zinc Steel.

# Code	Product Details	Qty
ABCB20P	200 (8") dia.	1
ABCB25P	250 (10") dia.	1
ABCB30P	300 (12") dia.	1
ABCB35P	350 (14") dia.	1

## Ceiling Drop Boxes with End Caps - Stainless



The Ceiling Box End Caps are fitted to a 900L Stainless Outer Flue Pipe to make a Ceiling Drop Box which is then fixed to Angles that support the Ceiling Box/Flue to the roof beams. These are painted Metallic Black.

Manufactured using AS/NZ Standard 304 2b Grade 0.6mm Stainless Steel.

# Code	Product Details	Qty
ABCB20S	200 (8") dia.	1
ABCB25S	250 (10") dia.	1
ABCB30S	300 (12") dia.	1
ABCB35S	350 (14") dia.	1



## CEILING BOX FLANGES WITH STRAPS FITTED PAINTED - GALVANIZED AND STAINLESS

### Ceiling Box Flanges with Straps Fitted Painted - Galvanized

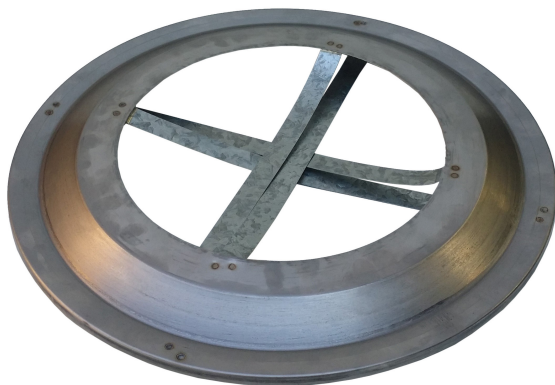


The Ceiling Box Flanges come as a separate item and are fitted to the Ceiling Drop Box to neaten up the ceiling cutout. These are painted Metallic Black.

Manufactured using AS/NZ Standard Grade Z275 0.6mm Zinc Steel.

# Code	Product Details	Qty
ABCO20P	200 (8") dia.	1
ABCO25P	250 (10") dia.	1
ABCO30P	300 (12") dia.	1
ABCO35P	350 (14") dia.	1

### Ceiling Box Flanges with Straps Fitted - Stainless



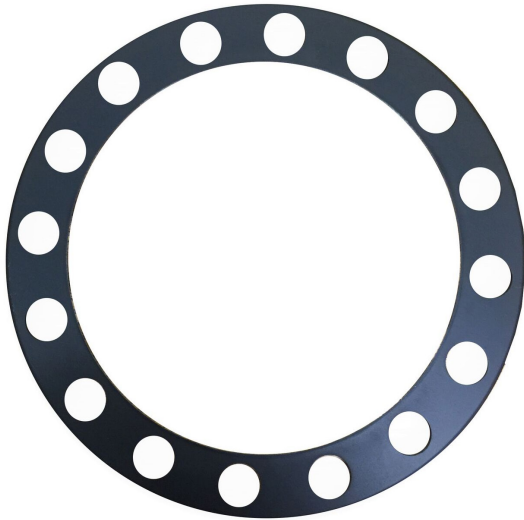
The Ceiling Box Flanges come as a separate item and are fitted to the Ceiling Drop Box to neaten up the ceiling cutout.

Manufactured using AS/NZ Standard Grade 304 Stainless Steel.

# Code	Product Details	Qty
ABCO20S	200 (8") dia.	1
ABCO25S	250 (10") dia. Approved	1
ABCO30S	300 (12") dia. Approved	1
ABCO35S	350 (14") dia. Approved	1



## Ceiling Box End Caps as Separate Part Painted - Galvanized



The Ceiling Box End Caps come as a separate item and can be fitted to a 900L Outer Flue Pipe to make a Ceiling Drop Box which is then fixed to Angles that support the Ceiling Box/Flue to the roof beams. These are painted Metallic Black.

Manufactured using AS/NZ Standard Grade Z275 0.6mm Galvanized Steel.

# Code	Product Details	Qty
ABCB20P	200 (8") dia.	1
ABCB25P	250 (10") dia.	1
ABCB30P	300 (12") dia.	1
ABCB35P	350 (14") dia.	1

## Ceiling Box End Caps as Separate Part Painted - Stainless



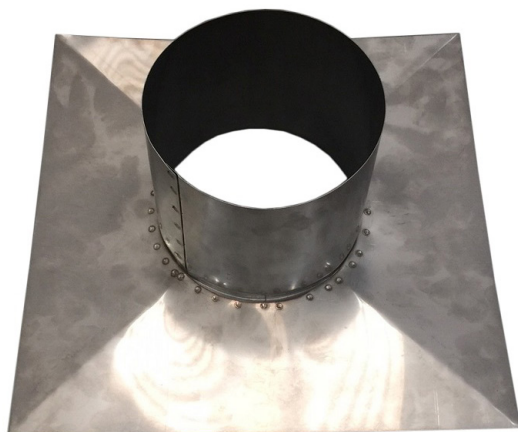
The Ceiling Box End Caps come as a separate item and can be fitted to a 900L length of Flue Pipe to form a Ceiling Drop Box. These are painted Metallic Black.

Manufactured using AS/NZ Standard 304 2b Grade 0.6mm Stainless Steel.

# Code	Product Details	Qty
ABCB20S	200 (8") dia.	1
ABCB25S	250 (10") dia.	1
ABCB30S	300 (12") dia.	1
ABCB35S	350 (14") dia.	1



## Chimney Plate suit Flexible Flue



Wood Fire Flexible Flue Pipe Chimney Plate suit 150mm (6") diameter Active Flue Pipe to be fixed to the top of a Masonry Chimney.

Manufactured using AS/NZ Standard 304 2b Grade 0.6mm Stainless Steel.

# Code	Product Details	Qty
ABFFPCHP15S	150 (6") dia. 350 sq. base plate	1



## Cowls - Wood Fire Galvanized (NO SKIRT)

Manufactured as a non-AGA approved terminal for the ventilation of Wood Fire flue pipe. Galvanized Wood Fire Cowls without skirts are generally used for single skin wood fire situations. Come in sizes from 100mm to 250mm diameters. Can add mesh for bush fire embers protection.

The cowl is manufactured using AS/NZ Standard Grade Z275 0.6mm Galvanized Steel.



# Code	Product Details	Qty
ABWFC10NSG	100 (4") dia. Galvanized NO SKIRT	1
ABWFC11NSG	115 (4.5") dia. Galvanized NO SKIRT	1
ABWFC12NSG	125 (5") dia. Galvanized NO SKIRT	1
ABWFC15NSG	150 (6") dia. Galvanized NO SKIRT	1
ABWFC17NSG	175 (7") dia. Galvanized NO SKIRT	1
ABWFC20NSG	200 (8") dia. Galvanized NO SKIRT	1
ABWFC22NSG	225 (9") dia. Galvanized NO SKIRT	1
ABWFC25NSG	250 (10") dia. Galvanized NO SKIRT	1

## Cowls - Wood Fire Stainless (NO SKIRT)

Manufactured as a non-AGA approved terminal for the ventilation of Wood Fire flue pipe. Stainless Steel Wood Fire Cowls without a skirt are generally used for single skin Wood Fire situations in a corrosive or near ocean environment. Can add mesh for bush fire embers protection. Come in sizes from 100mm to 250mm diameters.

Manufactured using AS/NZ Standard 304 2b Grade 0.6mm Stainless Steel.



# Code	Product Details	Qty
ABWFC10NSS	100 (4") dia. Stainless NO SKIRT	1
ABWFC11NSS	115 (4.5") dia. Stainless NO SKIRT	1
ABWFC12NSS	125 (5") dia. Stainless NO SKIRT	1
ABWFC15NSS	150 (6") dia. Stainless NO SKIRT	1
ABWFC17NSS	175 (7") dia. Stainless NO SKIRT	1
ABWFC20NSS	200 (8") dia. Stainless NO SKIRT	1
ABWFC22NSS	225 (9") dia. Stainless NO SKIRT	1
ABWFC25NSS	250 (10") dia. Stainless NO SKIRT	1

## Connector suit Flexible Flue Pipe



Wood Fire Flexible Flue Pipe Connector suit 150mm (6")  
Diameter Flexible Flue Pipe. Joins 2 sections of Flexible Flue.

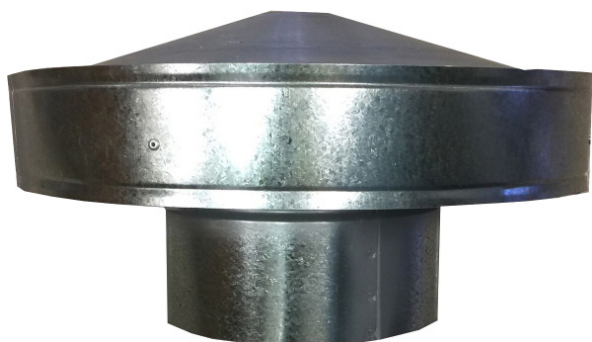
# Code	Product Details	Qty
ABFFC15S	150 (6") dia.	1





## COWLS AGA CERTIFIED 4234 AND 5524

### Cowls AGA Certified 4234 & 5524



Australian Made AGA approved Cowl available from 75mm diameter up to 250mm diameter. Can be used on both twin skin and Single Skin round flue pipe. Add an apron for twin skin applications. Come as single items or in a box of 16.

Manufactured using Australian Standard Grade G275 0.6mm Galvanized Steel.

# Code	Product Details	Qty
AB075CO	75 dia. AGA Approved	1
AB10CO	100 dia. AGA Approved	1
AB012CO	125 dia. AGA Approved	1
AB0150CO	150 dia. AGA Approved	1
AB0175CO	175 dia. AGA Approved	1
AB0200CO	200 dia. AGA Approved	1
AB0225CO	225 dia. AGA Approved	1
AB0250CO	250 dia. AGA Approved	1

## Cowls Stainless AGA Certified 4234 & 5524



Australian Made AGA approved Cowl available from 75mm diameter up to 250mm diameter. Used to terminate the wood fire flue pipe coming from a wood heater. Can be used on both twin skin and single skin round flue pipe. Add an apron for twin skin installations. Come as single items or in a box of 16.

Manufactured using Australian Standard Grade 0.6mm 316 Stainless Steel.

# Code	Product Details	Qty
ABSSCO75	75 dia. AGA Approved	1
ABSSCO100	100 dia. AGA Approved	1
ABSSCO125	125 dia. AGA Approved	1
ABSSCO150	150 dia. AGA Approved	1
ABSSCO175	175 dia. AGA Approved	1
ABSSCO200	200 dia. AGA Approved	1
ABSSCO225	225 dia. AGA Approved	1
ABSSCO250	250 dia. AGA Approved	1



### Cowl – Homestead - Stainless

Manufactured as a non AGA approved terminal for the ventilation of Wood Fire flue pipe that requires a heritage look and used in a brick fire place installation. Stainless Steel Heritage Cowls are generally used for Wood Fires and other ventilation situations in a corrosive or near ocean environment. Can add mesh for bush fire embers protection. Add an apron to use in a twin or triple skin design. Come in sizes from 250mm and 300mm diameters and square to suit chimneys. Can be manufactured as a custom size to suit chimney size.

Manufactured using AS/NZ Standard 304 2b Grade 0.6mm Stainless Steel.



# Code	Product Details	Qty
ABSSHSCO20	200 SQ.	1
ABSSHRCO25	250 dia.	1
ABSSHSCO25	250 SQ.	1
ABSSHSCO35	350 SQ.	1



## Cowls Horizontal Discharge Stainless AGA Certified 4234 & 5524



Australian Made AGA approved Cowl available from 75mm diameter up to 250mm diameter. Used to terminate the wood fire flue pipe coming from a wood heater in a horizontal flue termination through a wall. Can be used on both twin skin and single skin round flue pipe. Add an apron for twin skin installations. Come as single item.

Manufactured using Australian Standard Grade 0.6mm 316 Stainless Steel.



# Code	Product Details	Qty
ABHD075CO	75 dia. AGA Approved	1
ABHD100CO	100 dia. AGA Approved	1
ABHD125CO	125 dia. AGA Approved	1
ABHD150CO	150 dia. AGA Approved	1
ABHD175CO	175 dia. AGA Approved	1
ABHD200CO	200 dia. AGA Approved	1
ABHD225CO	225 dia. AGA Approved	1
ABHD250CO	250 dia. AGA Approved	1



## COWL - ROCKET STAINLESS (EXTRA DRAW)

### Cowl - Rocket Stainless (Extra Draw)



Manufactured as a non AGA approved terminal for the ventilation of Wood Fire flue pipe that requires extra draw in longer flue designs of 2 and even 3 story homes. Stainless Steel Rocket Cowls are generally used for Wood Fires and other ventilation situations in a corrosive or near ocean environment. Can add mesh for bush fire embers protection. Add an apron to use in a twin or triple skin design. Come in sizes from 75mm to 300mm diameters.

Manufactured using AS/NZ Standard 304 2b Grade 0.6mm Stainless Steel.

# Code	Product Details	Qty
ABRC075	75 dia.	1
ABRC100	100 dia.	1
ABRC125	125 dia.	1
ABRC150	150 dia.	1
ABRC175	175 dia.	1
ABRC200	200 dia.	1
ABRC225	225 dia.	1
ABRC250	250 dia.	1

## Cowls Vertical Discharge Stainless Skirt



A vertical discharge flue cowl is used as the termination of your Wood Fire flue (outside), it can be used instead of a standard wood fire cowl especially, when smoke from your heater is a problem. This can happen if a nearby tree is blocking the normal air flow across the top of the cowl, which can result in wood smoke congregating around the flue area instead of dissipating vertically. As it extends the flue length and ensures the smoke is vertically discharged. Can add mesh for bush fire embers protection.

Manufactured using AS/NZ Standard 304 2b Grade 0.6mm Stainless Steel.

# Code	Product Details	Qty
ABVDC10S	100 (4") dia.	1
ABVDC11S	115 (4.5") dia.	1
ABVDC12S	125 (5") dia.	1
ABVDC15S	150 (6") dia.	1
ABVDC17S	175 (7") dia.	1
ABVDC20S	200 (8") dia.	1
ABVDC25S	250 (10") dia.	1



## Wind Cowl Galvanized or Stainless



The Wind Cowl eliminates down draughts in windy conditions. Pilot lights that extinguish themselves, due to wind draughts will keep alight.

Rain, snow and birds are prevented from entering the chimney. The design, which has been proven over many years, ensures that the cowl will continue to ventilate the chimney when the fire or appliance is unlit.

It is available in 100mm to 300mm diameters.

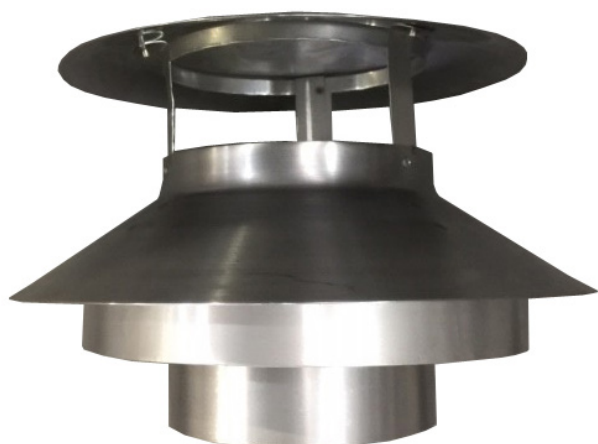
Fitting is simple, the stem of the cowl is slightly undersize so that it can slide down inside the bore of most prefabricated metal chimneys, liners or conventional brick chimneys. This joint should be sealed.

Please ensure that the fire/appliance has enough combustion air to operate correctly. Can add mesh for bush fire embers protection.

Manufactured using AS/NZ Standard Grade Z275 0.6mm Galvanized Steel or 304 2b Grade 0.6mm Stainless Steel.

# Code	Product Details	Qty
ABWC15G	150 Dia. Inc. skirt	1
ABWC20G	200 Dia. Inc. skirt	1
ABWC25G	250 Dia. Inc. skirt	1
ABWC15S	150 Dia. Inc. skirt Stainless	1
ABWC25S	200 Dia. Inc. skirt Stainless	1
ABRC200	250 Dia. Inc. skirt Stainless	1

## Cowls - Wood Fire - Galvanized Skirt



Manufactured as a non AGA approved terminal for the ventilation of Wood Fire flue pipe. Galvanized Wood Fire Cowls are generally used for twin skin or triple skin wood fire situations. Comes with a Galvanized steel apron and straps to use in a twin or triple skin design. Come in sizes from 75mm to 300mm diameters. Can add mesh for bush fire embers protection. The main part of the cowl is manufactured using AS/NZ Standard 304 2b Grade 0.6mm Stainless Steel and the apron is manufactured using AS/NZ Standard Grade Z275 0.6mm Galvanized Steel.

# Code	Product Details	Qty
ABWFFC10G	100 (4") dia. Inc. skirt	1
ABWFFC11G	115 (4.5") dia. Inc. skirt	1
ABWFFC12G	125 (5") dia. Inc. skirt	1
ABWFFC15G	150 (6") dia. Inc. skirt	1
ABWFFC17G	175 (7") dia. Inc. skirt	1
ABWFFC20G	200 (8") dia. Inc. skirt	1
ABWFFC25G	250 (10") dia. Inc. skirt	1



### Cowls - Wood Fire - All Stainless



Manufactured as a non AGA approved terminal for the ventilation of Wood Fire flue pipe. Stainless Steel Wood Fire Cowls are generally used for twin skin and triple skin Wood Fire situations in a corrosive or near ocean environment. Can add mesh for bush fire embers protection. Comes with a stainless apron to use in a twin or triple skin design. Come in sizes from 75mm to 300mm diameters.

Manufactured using AS/NZ Standard 304 2b Grade 0.6mm Stainless Steel

# Code	Product Details	Qty
ABWFFC10S	100 (4") dia. Inc. skirt	1
ABWFFC11S	115 (4.5") dia. Inc. skirt	1
ABWFFC12S	125 (5") dia. Inc. skirt	1
ABWFFC15S	150 (6") dia. Inc. skirt	1
ABWFFC20S	200 (8") dia. Inc. skirt	1
ABWFFC25S	250 (10") dia. Inc. skirt	1

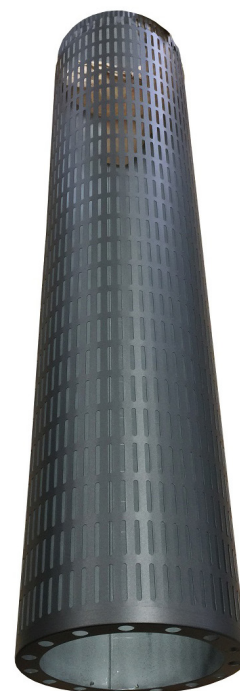
## Decorative Outer Flue - Painted

Decorative outer flue pipe designed with club and round pattern. Helps prevent burns from touching flue pipe and also to give a more cosmetic look to the finish of the Active flue pipe.

Manufactured using AS/NZ Standard 304 2b Grade 0.6mm Stainless Steel and finished in heat resistant Black.

# Code	Product Details	Qty
ABDEC15P	150 (6") dia. X 900L.	1
ABDEC17P	175 (7") dia. X 900L.	1
ABDEC20P	200 (8") dia. X 900L.	1
ABDEC25P	250 (10") dia. X 900L	1

Note. Comes in slotted pattern and custom shapes also.





## Decorative Outer Flue - Stainless



Decorative outer flue pipe designed with club and round pattern. Helps prevent burns from touching flue pipe and also to give a more cosmetic look to the finish of the Active flue pipe.

Manufactured using AS/NZ Standard 304 2b Grade 0.6mm Stainless Steel and finished in 2B finish.

# Code	Product Details	Qty
ABDEC15S	150 (6") dia. X 900L.	1
ABDEC17S	175 (7") dia. X 900L.	1
ABDEC20S	200 (8") dia. X 900L.	1
ABDEC25S	250 (10") dia. X 900L.	1

Note. Comes in Club and Round pattern and custom shapes also.



## Decorative Mesh 45°

Decorative outer Stainless Offset 45 degree designed with club and round pattern to deviate the flue pipe around an existing beam or obstruction. Helps prevent burns from touching flue pipe and also to give a more cosmetic look to the finish of the Active flue pipe.

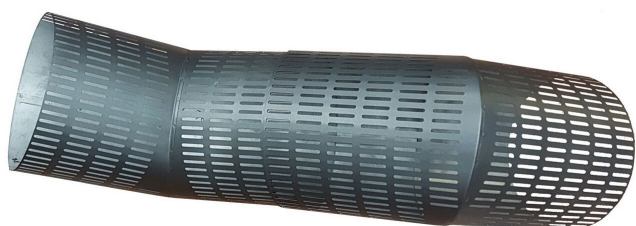
Manufactured using AS/NZ Standard 304 2b Grade 0.6mm Stainless Steel and finished in heat resistant Black or natural 2B Stainless finish.

# Code	Product Details	Qty
ABDEKOS4515	150 (6") dia.	1
ABDEKOS4517	175 (7") dia.	1
ABDEKOS4520	200 (8") dia.	1
ABDEKOS4525	250 (10") dia.	1

Note. Comes in Club and Round pattern and custom shapes also.



## Decorative Mesh 90°



Decorative outer Stainless Offset 90 degree designed with club and round pattern to deviate the flue pipe around an existing beam or obstruction. Helps prevent burns from touching flue pipe and also to give a more cosmetic look to the finish of the Active flue pipe.

Manufactured using AS/NZ Standard 304 2b Grade 0.6mm Stainless Steel and finished in heat resistant Black or natural 2B Stainless finish.

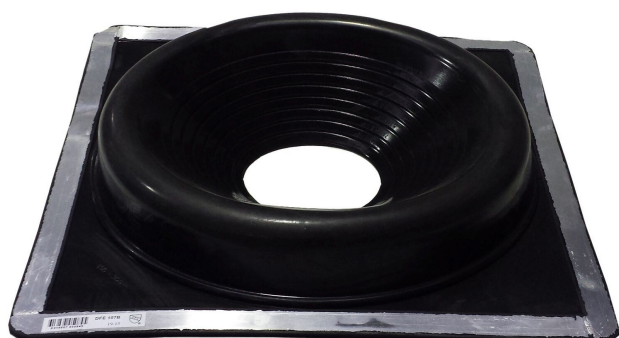
# Code	Product Details	Qty
ABDEKOS9015	150 (6") dia.	1
ABDEKOS9017	175 (7") dia.	1
ABDEKOS9020	200 (8") dia.	1
ABDEKOS9025	250 (10") dia.	1

Note. Comes in Club and Round pattern and custom shapes also.





## Dektite Flue Roof Flashing



Used to seal the flue pipe protrusion through either a Steel Colorbond roof or a Tiled roof. The square base will cover a larger opening and conforms with and follows all roof profiles. Dektite is available in a wide range of sizes and 2 different colors. Black dektites can be painted with acrylic paint & withstand temperatures up to 115 C or 150 C intermittently. Red silicone dektites will withstand temps up to 200 C or 250 C intermittently. Low profile base with watershed sleeve. Large square base will cover a larger opening. Twenty Year warranty – just fit it and forget it!

# Code	Product Details	Qty
ABDFE108B	Steel Roof suit flue 170-355 dia.	1
ABDFE104B	Steel Roof suit flue 75-175 dia.	1
ABDFE208RE	Steel Roof High Temp suit 170-355 dia.	1
ABDFE204RE	Steel Roof High Temp suit 75-175 dia.	1
ABDNL108B	Tile Roof suit flue 170-355 dia.	1
ABDNL103B	Tile Roof suit flue 70-175 dia.	1
ABDNL208RE	Tile Roof High Temp suit 170-355 dia.	1
ABDNL203RE	Tile Roof High Temp suit 50-175 dia.	1





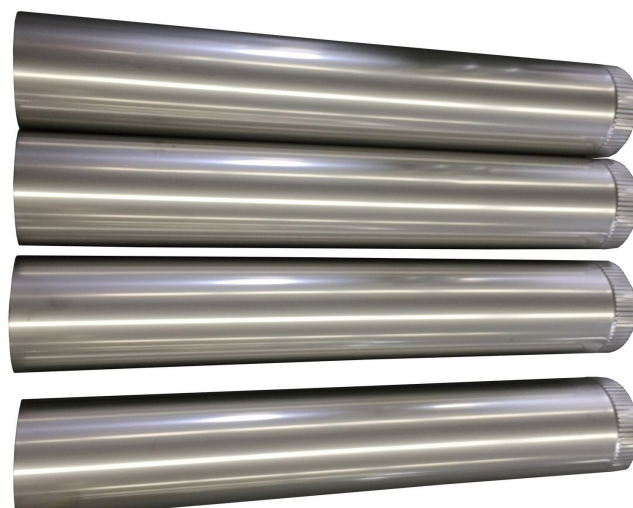


## Flues Stainless – Active

The Active flue pipe is the main inner skin flue pipe that must be able to withstand the high temperatures from the Wood Fire.

Manufactured using AS/NZ Standard 304 2b Grade 0.6mm Stainless Steel.

# Code	Product Details	Qty
ABSSFP10090WF	100 (4") Dia x 900 Stainless	1
ABSSFP11590WF	115 (4.5") Dia x 900 Stainless	1
ABSSFP12590WF	125 (5") Dia x 900 Stainless	1
ABSSFP15090WF	150 (6") Dia x 900 Stainless	1
ABSSFP17590WF	175 (7") Dia x 900 Stainless	1
ABSSFP20090WF	200 (8") Dia x 900 Stainless	1



## Flue Casings Inner & Outer - Galvanized



### Flue Casings Inner Galvanized

The inner Casings are the second skin outside the active flue pipe. Acts as a protection from flammable timbers. Comes with a spacer bracket to separate the flues.

Manufactured using AS/NZ Standard Grade Z275 0.6mm Galvanized Steel.

# Code	Product Details	Qty
ABIC15090	150 (6") Dia x 900 Galvanized	1
ABIC20090	200 (8") Dia x 900 Galvanized	1
ABIC25090	250 (10") Dia x 900 Galvanized	1



### Flue Casings Outer Galvanized

The outer Casings are the third skins outside the active flue pipe. Acts as a protection from flammable timbers

Manufactured using AS/NZ Standard Grade Z275 0.6mm Galvanized Steel.

# Code	Product Details	Qty
ABOC20090	200 (8") Dia x 900 Galvanized	1
ABOC25090	250 (10") Dia x 900 Galvanized	1
ABOC30090	300 (12") Dia x 900 Galvanized	1
ABOC35090	350 (14") Dia x 900 Galvanized	1

## Flue Casings Inner & Outer - Stainless



### Flue Casings Inner Stainless

The inner Casings are the second skins outside the active flue pipe. Acts as a protection from flammable timbers. Comes with brackets to separate inner and outer flues. Can be painted or natural 2B Stainless Finish.

Manufactured using AS/NZ Standard 304 2b Grade 0.6mm Stainless Steel.

# Code	Product Details	Qty
ABIC15090S	150 (6") Dia x 900 Stainless	1
ABIC20090S	200 (8") Dia x 900 Stainless	1
ABIC25090S	200 (8") Dia x 900 Stainless	1

### Flue Casings Outer Stainless

The outer Casings are the third skins outside the active flue pipe. Acts as a protection from flammable timbers. Can be painted or natural 2B Stainless Finish.

Manufactured using AS/NZ Standard 304 2b Grade 0.6mm Stainless Steel.

# Code	Product Details	Qty
ABOC20090S	200 (8") Dia x 900 Stainless	1
ABOC25090S	250 (10") Dia x 900 Stainless	1
ABOC30090S	300 (12") Dia x 900 Stainless	1
ABOC35090S	350 (14") Dia x 900 Stainless	1



## Flue Pipe Triple Set

### Flue Pipe Triple Set

Wood Fire Triple Skin Flue Pipe Set is used to extend the 150mm (6") Active Flue, 200mm (8") Inner Casing and 250mm (10") Outer Casing.

# Code	Product Details	Qty
ABFS15	150 (6") - 200 (8") - 250 (10")	1







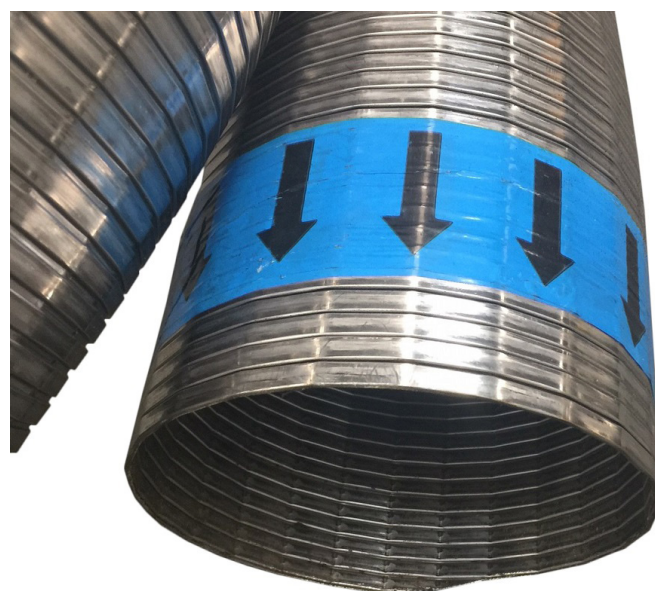
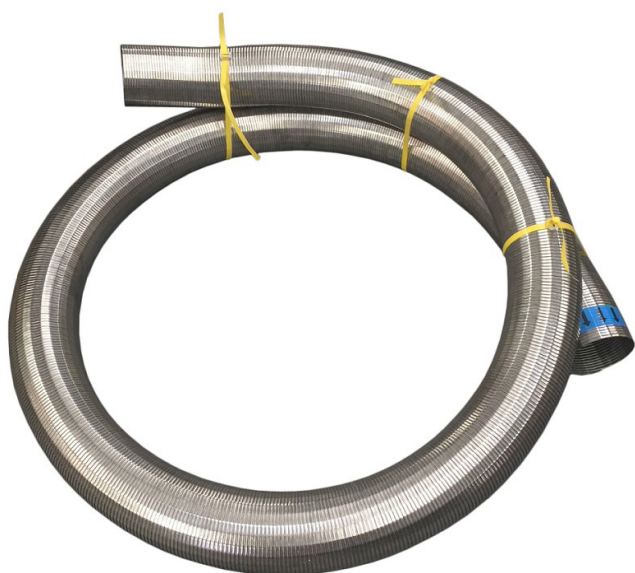
## Flue Pipe Flexible

### Flue Pipe Flexible

Single Skin Stainless Steel Flexible Chimney Flue Liner 316  
Stainless used to line the inside of a Masonry Chimney. Comes in 1m lengths up to 5m long.

# Code	Product Details	Qty
ABFFP1501S	1000mm long	1
ABFFP1502S	2000mm long	1
ABFFP1503S	3000mm long	1
ABFFP1504S	4000mm long	1
ABFFP1505S	5000mm long	1

Other diameters 125mm (5") up to 200mm (8") available POA



## Offset - Galvanized

Galvanized steel Offset is designed to divert the Inner and Outer Casing Flue Pipe around a beam or other obstruction. Manufactured using AS/NZ Standard Grade Z275 0.6mm Galvanized Steel.



# Code	Product Details	Qty
ABWFO10G	100 (4") x 45 degree Galv	1
ABWFO11G	115 (4 ½") x 45 degree Galv	1
ABWFO12G	125 (5") x 45 degree Galv	1
ABWFO15G	150 (6") x 45 degree Galv	1
ABWFO17G	175 (7") x 45 degree Galv	1
ABWFO20G	200 (8") x 45 degree Galv	1
ABWFO22G	225 (9") x 45 degree Galv	1
ABWFO25G	250 (10") x 45 degree Galv	1
ABWFO27G	275 (11") x 45 degree Galv	1
ABWFO30G	300 (12") x 45 degree Galv	1
ABWFO35G	350 (14") x 45 degree Galv	1



# Code	Product Details	Qty
ABWFOS10G	100 (4") x 90 degree Galv	1
ABWFOS11G	115 (4 ½") x 90 degree Galv	1
ABWFOS12G	125 (5") x 90 degree Galv	1
ABWFOS15G	150 (6") x 90 degree Galv	1
ABWFOS17G	175 (7") x 90 degree Galv	1
ABWFOS20G	200 (8") x 90 degree Galv	1
ABWFOS22G	225 (9") x 90 degree Galv	1
ABWFOS25G	250 (10") x 90 degree Galv	1
ABWFOS27G	275 (11") x 90 degree Galv	1
ABWFOS30G	300 (12") x 90 degree Galv	1
ABWFOS35G	350 (14") x 90 degree Galv	1

## Offset - Stainless

Stainless steel Offset is designed to divert the Inner and Outer Stainless Casing or the Active flue pipe around a beam or other obstruction.

Manufactured using AS/NZ Standard 304 2b Grade 0.6mm Stainless Steel.



# Code	Product Details	Qty
ABWFO10S	100 (4") x 45 degree Stainless	1
ABWFO11S	115 (4 1/2") x 45 degree Stainless	1
ABWFO12S	125 (5") x 45 degree Stainless	1
ABWFO15S	150 (6") x 45 degree Stainless	1
ABWFO17S	175 (7") x 45 degree Stainless	1
ABWFO20S	200 (8") x 45 degree Stainless	1
ABWFO22S	225 (9") x 45 degree Stainless	1
ABWFO25S	250 (10") x 45 degree Stainless	1
ABWFO27S	275 (11") x 45 degree Stainless	1
ABWFO30S	300 (12") x 45 degree Stainless	1
ABWFO35S	350 (14") x 45 degree Stainless	1

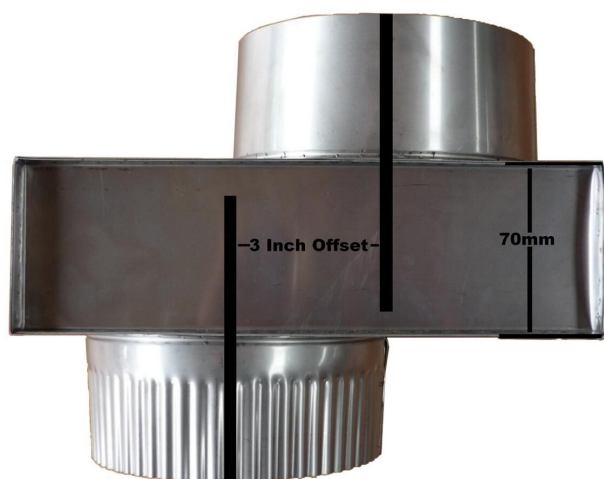


# Code	Product Details	Qty
ABWFOS10S	100 (4") x 90 degree Stainless	1
ABWFOS11S	115 (4 1/2") x 90 degree Stainless	1
ABWFOS12S	125 (5") x 90 degree Stainless	1
ABWFOS15S	150 (6") x 90 degree Stainless	1
ABWFOS17S	175 (7") x 90 degree Stainless	1
ABWFOS20S	200 (8") x 90 degree Stainless	1
ABWFOS22S	225 (9") x 90 degree Stainless	1
ABWFOS25S	250 (10") x 90 degree Stainless	1
ABWFOS27S	275 (11") x 90 degree Stainless	1
ABWFOS30S	300 (12") x 90 degree Stainless	1
ABWFOS35S	350 (14") x 90 degree Stainless	1

## Offset flat back 90° – Stainless

A low profile rectangular offset that can fit into a small ceiling space as little as 100mm thick and offset approximately 200mm. Come with round diameter spigots from 100mm up to 300mm.

Manufactured using AS/NZ Standard 304 2b Grade 0.6mm Stainless Steel.



# Code	Product Details	Qty
ABFBOS100S	100 (4") x 90 degree	1
ABFBOS115S	115 (4.5") x 90 degree	1
ABFBOS125S	125 (5") x 90 degree	1
ABFBOS150S	150 (6") x 90 degree	1
ABFBOS175S	175 (7") x 90 degree	1
ABFBOS200S	200 (8") x 90 degree	1
ABFBOS225S	225 (9") x 90 degree	1
ABFBOS250S	250 (10") x 90 degree	1
ABFBOS300S	300 (12") x 90 degree	1





## Offset Mantle



A 150mm (6") 304 2b Stainless Steel 45-degree Wood Fire direct offset is for diverting the pipe to 45°. It can be installed on roofs and or floors.

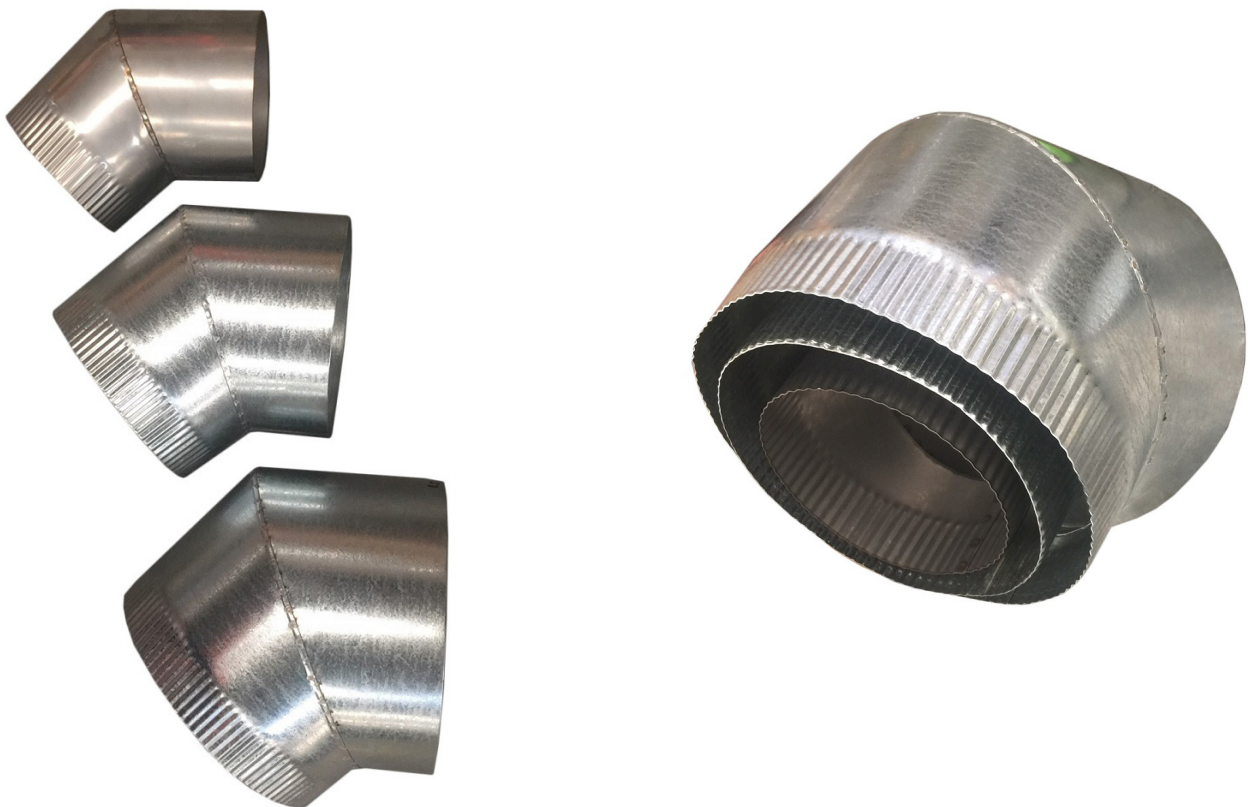
Manufactured using AS/NZ Standard 304 2b Grade 0.6mm Stainless Steel.

# Code	Product Details	Qty
ABOSM15S	150 (6") dia. X 45 degree Stainless	1

## Offset 45° Elbow Triple Skin

Triple Skin Elbows suit 150mm diameter Wood Fire Active (Stainless), 200mm (8") diameter Inner Casing (Galv) and 250mm (10") diameter Outer Casing (Galv).

# Code	Product Details	Qty
ABWFTSEK150	150 (6") - 200 (8") - 250 (10")	1





## Heat Shield - Stainless



Fitted to the back of the Active flue Pipe, between the Decro Mesh Flue Pipe and Active Flue Pipe to deflect more heat into the room and protect the wall from heat damage. Designed in a semi-circular shape to reflect the heat. Comes in 900 and 1200 Long.

Manufactured using AS/NZ Standard 304 2b Grade 0.6mm Stainless Steel.

# Code	Product Details	Qty
ABHS15S	150 (6") dia. Heat Shield	1
ABHS17S	175 (7") dia. Heat Shield	1

## Raked Ceiling Flanges - Painted and Stainless



Ceiling Flange is used to neaten up the cut out and help provide clearance in the ceiling for the flue pipe or ceiling box to pass through. Designed in an elliptical shape to match the outside of a flue passing through a Raked ceiling of various angles from 10 degrees up to 30 degrees.. Can be made in various flue sizes from 75mm diameter up to 300mm.

Manufactured using AS/NZ Standard Grade Z275 0.6mm Galvanized Steel and finished in Black.

# Code	Product Details	Qty
ABRCF1520P	150 (6") dia. 10-20 degree	1
ABRCF1530P	150 (6") dia. 20-30 degree	1
ABRCF2020P	200 (8") dia. 10-20 degree	1
ABRCF2030P	200 (8") dia. 20-30 degree	1
ABRCF2520P	250 (10") dia. 10-20 degree	1
ABRCF2530P	250 (10") dia. 20-30 degree	1



Ceiling Flange is used to neaten up the cut out and help provide clearance in the ceiling for the flue pipe or ceiling box to pass through. Designed in an elliptical shape to match the outside of a flue passing through a Raked ceiling of various angles from 10 degrees up to 30 degrees.. Can be made in various flue sizes from 75mm diameter up to 300mm.

Manufactured using AS/NZ Standard 304 2b Grade 0.6mm Stainless Steel and finished in heat resistant Black or natural 2B Stainless finish.

# Code	Product Details	Qty
ABRCF1520S	150 (6") dia. 10-20 degree	1
ABRCF1530S	150 (6") dia. 20-30 degree	1
ABRCF2020S	200 (8") dia. 10-20 degree	1
ABRCF2030S	200 (8") dia. 20-30 degree	1
ABRCF2520S	250 (10") dia. 10-20 degree	1
ABRCF2530S	250 (10") dia. 20-30 degree	1



## Reducers - Galvanized and Stainless



Manufactured and designed to change the diameter of the Inner and Outer Casing to a smaller or larger diameter.

Available in any diameter variations.

Manufactured using AS/NZ Standard Grade Z275 0.6mm Galvanized Steel.

# Code	Product Details	Qty
ABRR11G	115 - Small end	1
ABRR12G	125 - Small end	1
ABRR15G	150 - Small end	1
ABRR17G	175 - Small end	1
ABRR20G	200 - Small end	1

Note. Larger sizes available.



Manufactured and designed to change the diameter of the Inner and Outer Casing to a smaller or larger diameter.

Available in any diameter variations.

Manufactured using AS/NZ Standard 304 2b Grade 0.6mm Stainless Steel.

# Code	Product Details	Qty
ABRR11S	115 - Small end	1
ABRR12S	125 - Small end	1
ABRR15S	150 - Small end	1
ABRR17S	175 - Small end	1
ABRR20S	200 - Small end	1

Note. Larger sizes available.

## Stand Off Wall Brackets - Galvanized

Used when the flue pipe needs to be supported and is bolted to the wall using screws and plugs. Comes in any size from 75mm up to 300mm diameter.

Manufactured using AS/NZ Standard Grade Z275 0.8mm Galvanized Steel.



# Code	Product Details	Qty
ABSOB100G	100 (4") x 250L Galv	1
ABSOB115G	100 (4 1/2") x 250L Galv	1
ABSOB125G	100 (5") x 250L Galv	1
ABSOB150G	100 (6") x 250L Galv	1
ABSOB175G	100 (7") x 250L Galv	1
ABSOB200G	100 (8") x 250L Galv	1
ABSOB250G	100 (10") x 250L Galv	1
ABSOB300G	100 (12") x 250L Galv	1
ABSOB350G	100 (14") x 250L Galv	1

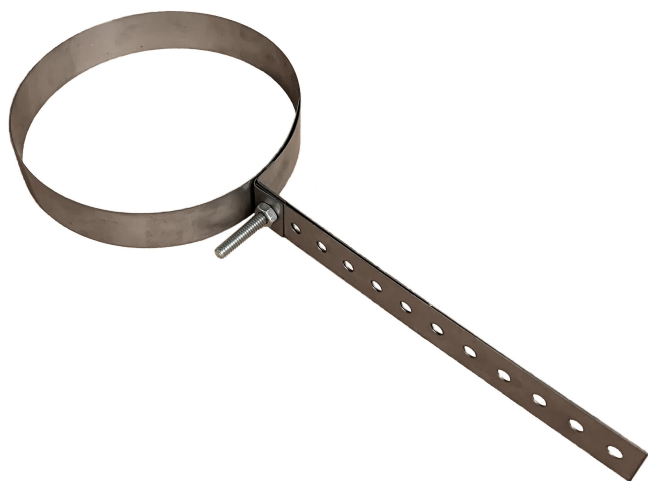


## STAND OFF WALL BRACKETS - STAINLESS

### Stand Off Wall Brackets - Stainless

Used when the flue pipe needs to be supported and is bolted to the wall using screws and plugs. Comes in any size from 75mm up to 300mm diameter.

Manufactured using AS/NZ Standard 304 2b Grade 0.6mm Stainless Steel.



# Code	Product Details	Qty
ABSOB100S	100 (4") x 250L Stainless	1
ABSOB115S	100 (4 1/2") x 250L Stainless	1
ABSOB125S	100 (5") x 250L Stainless	1
ABSOB150S	100 (6") x 250L Stainless	1
ABSOB175S	100 (7") x 250L Stainless	1
ABSOB200S	100 (8") x 250L Stainless	1
ABSOB250S	100 (10") x 250L Stainless	1
ABSOB300S	100 (12") x 250L Stainless	1
ABSOB350S	100 (14") x 250L Stainless	1

## TEE Stainless



T Piece with removeable cap for easy cleaning of flue. Comes in sizes from 100mm (4") up to 350mm (14")

# Code	Product Details	Qty
ABT100S	100mm (4") dia. 304 2b Stainless	1
ABT125S	125mm (5") dia. 304 2b Stainless	1
ABT150S	150mm (6") dia. 304 2b Stainless	1
ABT200S	200mm (8") dia. 304 2b Stainless	1
ABT250S	250mm (10") dia. 304 2b Stainless	1
ABT300S	300mm (12") dia. 304 2b Stainless	1
ABT350S	350mm (14") dia. 304 2b Stainless	1





## Tee Galvanized



T Piece with removeable cap for easy cleaning of flue. Comes in sizes from 100mm (4") up to 350mm (14")

# Code	Product Details	Qty
ABT100	100mm (4") dia. Z275 Galvanized	1
ABT125	125mm (5") dia. Z275 Galvanized	1
ABT150	150mm (6") dia. Z275 Galvanized	1
ABT200	200mm (8") dia. Z275 Galvanized	1
ABT250	250mm (10") dia. Z275 Galvanized	1
ABT300	300mm (12") dia. Z275 Galvanized	1
ABT350	350mm (14") dia. Z275 Galvanized	1

## Wood Fire Zero Clearance Box



The kit contains one complete Zero Clearance Galvanized Enclosure it is a high-quality Twin Skin construction that has been fully approved for use in Plaster board, timber framed constructions.

Coupled with a Zero Clearance 150mm (6") Flue kit (ABFKZC150), this is the best way to heat your home, as heat that is usually lost up a masonry chimney is reticulated back into the home. Comes complete and in kit form.

# Code	Product Details	Qty
ABWFZCB15	150mm (6") Outlet Twin Skin	1

## Wood Fire Flue Kits - Stainless



This Kit is perfect for most single story houses, or Garage with a ceiling of approx. 9' or 2.7 meters (depending on height of heater) and a roof cavity of less than 1 meter. Outer Skin is natural 2B Stainless finish.

\*For other applications, extra pipes may be required\*

This kit consists of:

- 4 Stainless Steel Active Flue Pipes 900L
- 2 x Outer Skin Flue Pipes 900L
- 2 x Inner Skin Flue Pipes 900L
- 1 x Stainless Steel Wood Fire Cowl including Apron
- 1 x Ceiling Box Flue Stainless 900L
- 1 x Ceiling Flange Stainless
- 2 x Ceiling Angles

Manufactured using AS/NZ Standard Grade 304 2b Grade 0.6mm Stainless Steel.

# Code	Product Details	Qty
ABFK10S	100 Wood Fire Flue Kit Stainless	1
ABFK11S	115 Wood Fire Flue Kit Stainless	1
ABFK12S	125 Wood Fire Flue Kit Stainless	1
ABFK15S	150 Wood Fire Flue Kit Stainless	1
ABFK17S	175 Wood Fire Flue Kit Stainless	1

# WOOD FIRE FLUE KITS - PAINTED METALLIC BLACK TRIPLE SKIN FLUE KIT



## Wood Fire Flue Kits - Painted Metallic Black Triple Skin Flue Kit



This Kit is perfect for most single story houses, or Garage with a ceiling of approx. 9' or 2.7 meters (depending on height of heater) and a roof cavity of less than 1 meter. Outer Skin is painted Satin Black or Charcoal.

\*For other applications, extra pipes may be required\*

This kit consists of:

- 2 x Stainless Steel Active Flue Pipes 900L
- 2 x Stainless Steel Active Flue Pipes painted 900L
- 2 x Outer Skin Flue Pipes 900L
- 2 x Inner Skin Flue Pipes 900L
- 1 x Stainless Steel Wood Fire Cowl including Apron
- 1 x Ceiling Box Flue Painted 900L
- 1 x Ceiling Flange Painted
- 2 x Ceiling Angles

Manufactured using AS/NZ Standard Grade Z275 0.6mm Galvanized Steel or 304 2b Grade 0.6mm Stainless Steel.

# Code	Product Details	Qty
ABFK10P	100 Wood Fire Flue Kit Painted	1
ABFK11P	115 Wood Fire Flue Kit Painted	1
ABFK12P	125 Wood Fire Flue Kit Painted	1
ABFK15P	150 Wood Fire Flue Kit Painted	1
ABFK17P	175 Wood Fire Flue Kit Painted	1



### Decorative Mesh Kits – Full Kit - Stainless



This Kit is perfect for most single story houses, or Garage with a ceiling of approx. 9' or 2.7 meters (depending on height of heater) and a roof cavity of less than 1 meter. Outer Skin is Club and Round pattern or Slotted pattern Stainless Decorative Mesh Flue Pipe.

\*For other applications, extra pipes may be required\*

This kit consists of:

- 4 x Stainless Steel Active Flue Pipes 900L
- 2 x Outer Skin Stainless Decorative Mesh Flue Pipes 900L
- 1 x Bottom Alignment Ring Stainless
- 2 x Inner Skin Flue Pipes 900L
- 1 x Outer Skin Flue Pipe 900L
- 1 x Stainless Steel Wood Fire Cowl including Apron
- 1 x Ceiling Box Flue 900L
- 1 x Ceiling Flange Stainless
- 1 x Heat-shield Stainless
- 2 x Ceiling Angles Galvanized

Manufactured using AS/NZ Standard Grade Z275 0.6mm

# Code	Product Details	Qty
ABFK15SDK	Decorative Mesh Kit 150 dia. - Stainless	1
ABFK17SDK	Decorative Mesh Kit 200 dia. - Stainless	1

## Decorative Mesh Kits – Full Kit - Painted Metallic Black



This Kit is perfect for most single story houses, or Garage with a ceiling of approx. 9' or 2.7 meters (depending on height of heater) and a roof cavity of less than 1 meter. Outer Skin is Club and Round pattern or Slotted pattern Stainless Decorative Mesh Flue Pipe.

\*For other applications, extra pipes may be required\*

This kit consist of:

- 4 x Stainless Steel Active Flue Pipes 900L
- 2 x Outer Skin Painted Decorative Mesh Flue Pipes 900L
- 1 x Bottom Alignment Ring Painted
- 2 x Inner Skin Flue Pipes 900L
- 1 x Outer Skin Flue Pipe 900L
- 1 x Stainless Steel Wood Fire Cowl including Apron
- 1 x Ceiling Box Flue 900L Painted
- 1 x Ceiling Flange Painted
- 1 x Heat-shield Stainless
- 2 x Ceiling Angles Galvanized

Manufactured using AS/NZ Standard Grade Z275 0.6mm

# Code	Product Details	Qty
ABFK15DK	Decorative Mesh Kit 150 dia. - Painted	1
ABFK17DK	Decorative Mesh Kit 200 dia. - Painted	1

## Decorative Mesh Kit's - Stainless - Flue Only



This Kit is perfect for most single story houses, or Garage with a ceiling of approx. 9' or 2.7 meters (depending on height of heater) where the existing flue needs a Decro-mesh outer. Outer Skin is Stainless Finish.

\*For other applications, extra pipes may be required\*

This kit consists of:

- 2 Decro-mesh Flue Pipes Stainless 900L
- 1 x Ceiling Box End Cap with vent holes
- 1 x Bottom Alignment Ring
- 1 x Heat Shield Stainless

Manufactured using AS/NZ Standard Grade Z275 0.6mm Galvanized Steel or 304 2b Grade 0.6mm Stainless Steel.

# Code	Product Details	Qty
ABDEK15S	Decorative Mesh Kit 150 dia. - Painted	1
ABDEK17S	Decorative Mesh Kit 175 dia. - Painted	1
ABDEK20S	Decorative Mesh Kit 200 dia. - Painted	1



## Decorative Mesh Kit's - Painted - Flue Only



This Kit is perfect for most single story houses, or Garage with a ceiling of approx. 9' or 2.7 meters (depending on height of heater) where the existing flue needs a Decro mesh Outer Skin in a Painted Finish.

\*For other applications, extra pipes may be required\*

This kit consists of:

- 2 Decro-mesh Flue Pipes Stainless 900L
- 1 x Ceiling Box End Cap with vent holes
- 1 x Bottom Alignment Ring
- 1 x Heat Shield Stainless

Manufactured using AS/NZ Standard Grade Z275 0.6mm Galvanized Steel or 304 2b Grade 0.6mm Stainless Steel.

# Code	Product Details	Qty
ABDEK15P	Decorative Mesh Kit 150 dia. - Painted	1
ABDEK17P	Decorative Mesh Kit 175 dia. - Painted	1
ABDEK20P	Decorative Mesh Kit 200 dia. - Painted	1





## Chimney Flue Kits



This Kit is perfect for most single story houses, or Garages to line the inside of an existing chimney with a roof height of approx. 11' or 3.4 meters (depending on height of heater outlet).

\*For other applications, extra pipes may be required\*

This kit consists of:

- 4 Stainless Steel Flue Pipes 900L
- 1 x Stainless Steel Wood Fire Cowl no apron
- 1 Chimney Plate Galvanized

Manufactured using AS/NZ Standard Grade Z275 0.6mm Galvanized Steel or 304 2b Grade 0.6mm Stainless Steel.

We can freight Australia Wide, please call us for a freight quote.

# Code	Product Details	Qty
ABFKCH15	Chimney Flue Kit 150 dia. - Stainless	1

## Pizza Oven Flue Kits



This Kit is perfect for most Pizza Ovens installed under a Carport or in a Garage with a ceiling of approx. 9' or 2.7 meters (depending on height of Pizza Oven) and a roof cavity of less than 1 meter. Outer Skin is painted Satin Black.

\*For other applications, extra pipes may be required\*

### THIS KIT CONSISTS OF:

- 2 x Stainless Steel Active 150 diameter Flue Pipes 900L
- 2 x Stainless Steel Active 200 diameter Flue Pipes 900L
- 1 x Stainless Steel Wood Fire Cowl including Apron
- 1 x Bottom Alignment Ring stainless
- 1 x Ceiling Flange Stainless
- 2 x Ceiling Angles

Manufactured using AS/NZ Standard Grade Z275 0.6mm Galvanized Steel or 304 2b Grade 0.6mm Stainless Steel.

We can freight Australia Wide, please call us for a freight quote

# Code	Product Details	Qty
ABPOFK15P	150 Dia. Pizza Oven - Painted Flue Kit	1
ABPOFK15S	150 Dia. Pizza Oven - Stainless Flue Kit	1

## Wall Penetration Flue Kit



This Kit is perfect for most single story houses where the flue pipe needs to pass through a wall at 45 degrees to vent up through eaves to outside. Outer Skin is painted Satin Black or Charcoal.

This kit consists of:

- 1 Stainless Steel Active Flue Pipe 150 x 750L
- 1 x Inner Skin Flue Pipes 200 x 750L
- 1 x Stainless Steel Offset Pair 45 Degree
- 1 x Offset 200mm Painted Decro mesh 45 Degree
- 1 x Offset 250mm Galv. 45 Degree
- 1 x Ceiling Box Flue Painted 750L
- 2 x Raked Ceiling Flanges

Manufactured using AS/NZ Standard Grade Z275 0.6mm Galvanized Steel or 304 2b Grade 0.6mm Stainless Steel.

We can freight Australia Wide, please call us for a freight quote

# Code	Product Details	Qty
ABWPFK15P	150 dia. Wall Penetration - Painted Flue Kit	1
ABWPFK15S	150 dia. Wall Penetration - Stainless Flue Kit	1

## Floor/Ceiling Penetration Flue Kit



This Kit is perfect for most double story houses to penetrate the floor or ceiling between lower and upper stories. Suits a floor/ceiling space of less than 300mm. Outer Skin is painted Satin Black.

This kit consist of:

- 1 Stainless Steel Active Flue Pipe 450L
- 2 x Outer Skin Flue Pipes 450
- 1 x Inner Skin Flue Pipes 450L
- 2 x Ceiling Box End Caps
- 2 x Ceiling Flanges

Manufactured using AS/NZ Standard Grade Z275 0.6mm Galvanized Steel or 304 2b Grade 0.6mm Stainless Steel.

We can freight Australia Wide, please call us for a freight quote

# Code	Product Details	Qty
ABFPPK15P	150 dia. Floor/Ceiling Kit - Painted Flue Kit	1
ABFPPK15S	150 dia. Floor/Ceiling Kit - Stainless Flue Kit	1





## Flexible Flue Chimney Liner Flue Kit



This Kit is perfect for most single and double story houses to line the inside of a masonry chimney between lower and upper stories. Suits a brick chimney with an offset of less than 1.5m bend radius.

This kit consist of:

- 1 Flue Pipe Flexible 150mm (6") x 5000L
- 1 Flexible Flue Connector 150 mm dia. Stainless
- 1 Chimney Plate suit Flexible Flue Pipe 150 mm dia.
- 1 Cowl Wood Fire 150mm dia. No Skirt

Manufactured using AS/NZ Standard Grade Z275 0.6mm Galvanized Steel or 304 2b Grade 0.6mm Stainless Steel.

We can freight Australia Wide, please call us for a freight quote

# Code	Product Details	Qty
ABFKFFC15S	Flue Kit 150mm (6") dia. Stainless X 5000L	1

## Zero Clearance Triple Flue Kit



This Flue Kit is required when installing a Zero Clearance Box.

This kit consist of:

- 4 Stainless Steel Active Flue Pipe 150mm dia. x 900L
- 4 x Outer Skin Flue Pipes 250mm (10") dia. x 900L
- 4 x Inner Skin Flue Pipes 200mm (8") dia. x 900L
- 1 x Cowl Wood Fire 150mm (6") dia. including skirt

Manufactured using AS/NZ Standard Grade Z275 0.6mm Galvanized Steel or 304 2b Grade 0.6mm Stainless Steel.

We can freight Australia Wide, please call us for a freight quote

# Code	Product Details	Qty
ABWFZC15	150mm (6") 200 (8") & 250 (10") dia. Stainless X 900L	1

## Stove Bright Touch up Paint Cans



Can be used as a touch up for damaged outer flue pipe

Metallic Black *	SBP6309A
Charcoal	SBP6201A
Pewter	SBP6321A
Golden Fire Brown	SBP6230A
Honey Glow Brown	SBP6311A
Satin Black	SBP1990A

\* This is a standard colour.

# Code	Product Details	Qty
SBP6309A	Metallic Black-Standard Colour	1
SBP6201A	Charcoal	1
SBP6321A	Pewter	1
SBP6230A	Golden Fire Brown	1
SBP6311A	Honey Glow Brown	1
SBP1990A	Satin Black	1



#### CONTACT INFO

5 Bremen Drive, Salisbury South 5106, SA.

Phone: (08) 8281 1211

Fax: (08) 8281 7443

Website: [www.abindustries.com.au](http://www.abindustries.com.au)

E-mail: [enquiries@abindustries.com.au](mailto:enquiries@abindustries.com.au)

